



NAT & VPN



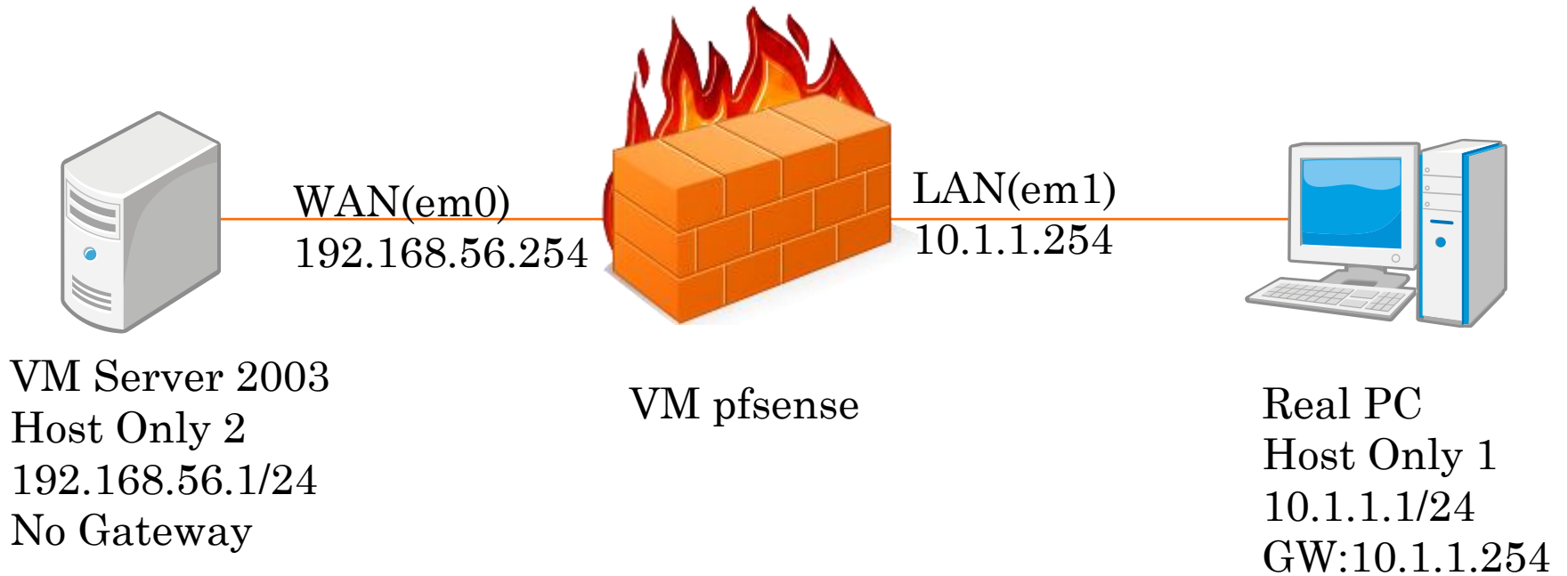
2012-10-15

大綱

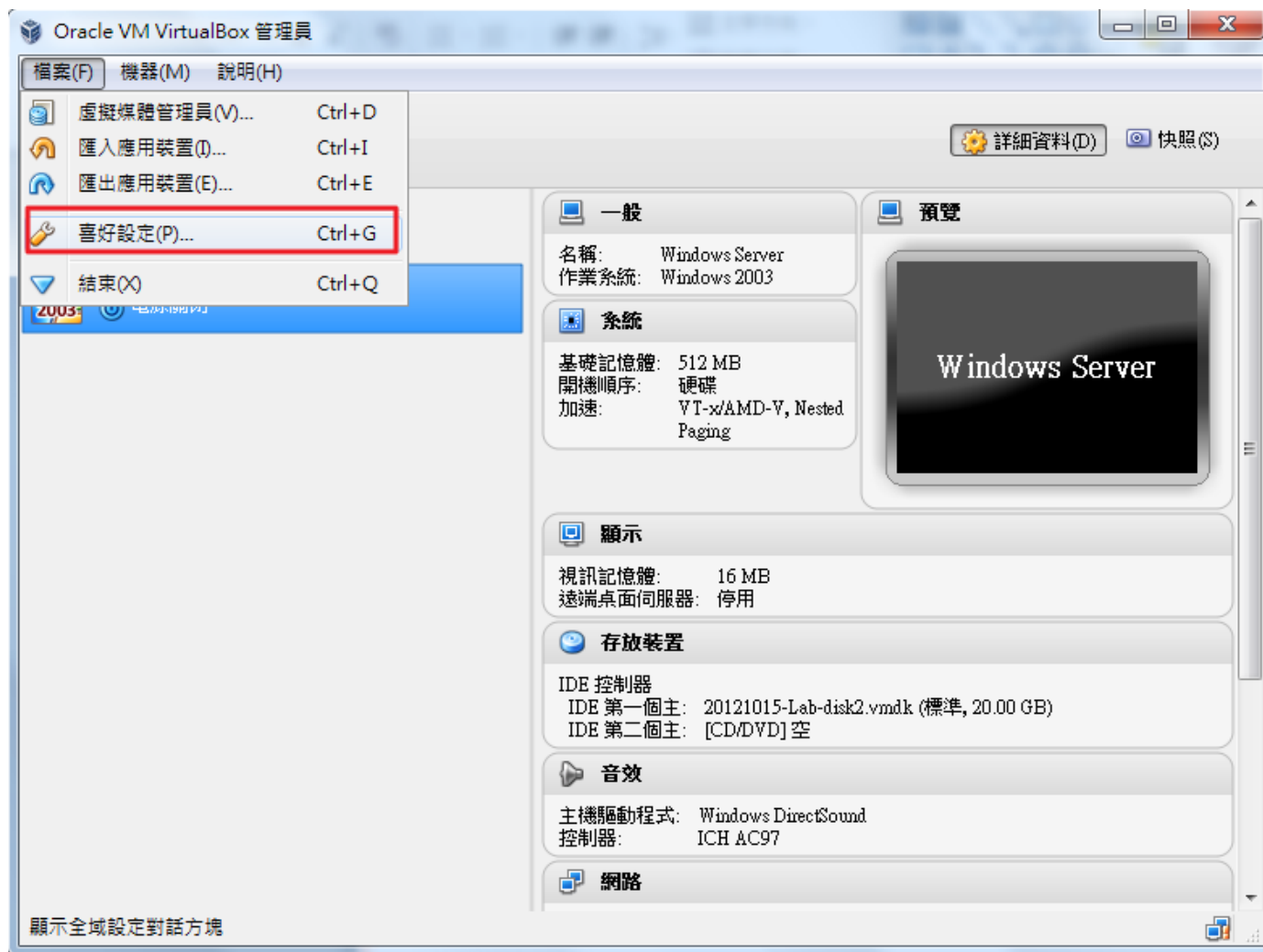
- LAB環境
- NAT
- PPTP VPN



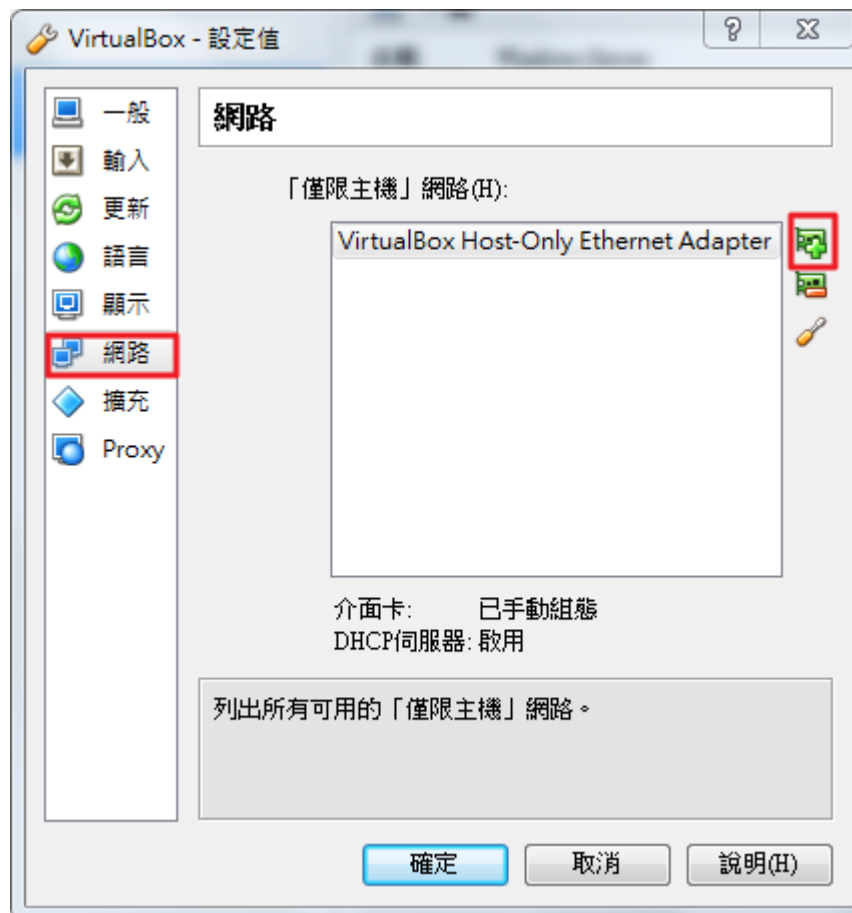
LAB環境



LAB環境-新增HOST ONLY網卡



LAB環境-新增HOST ONLY網卡

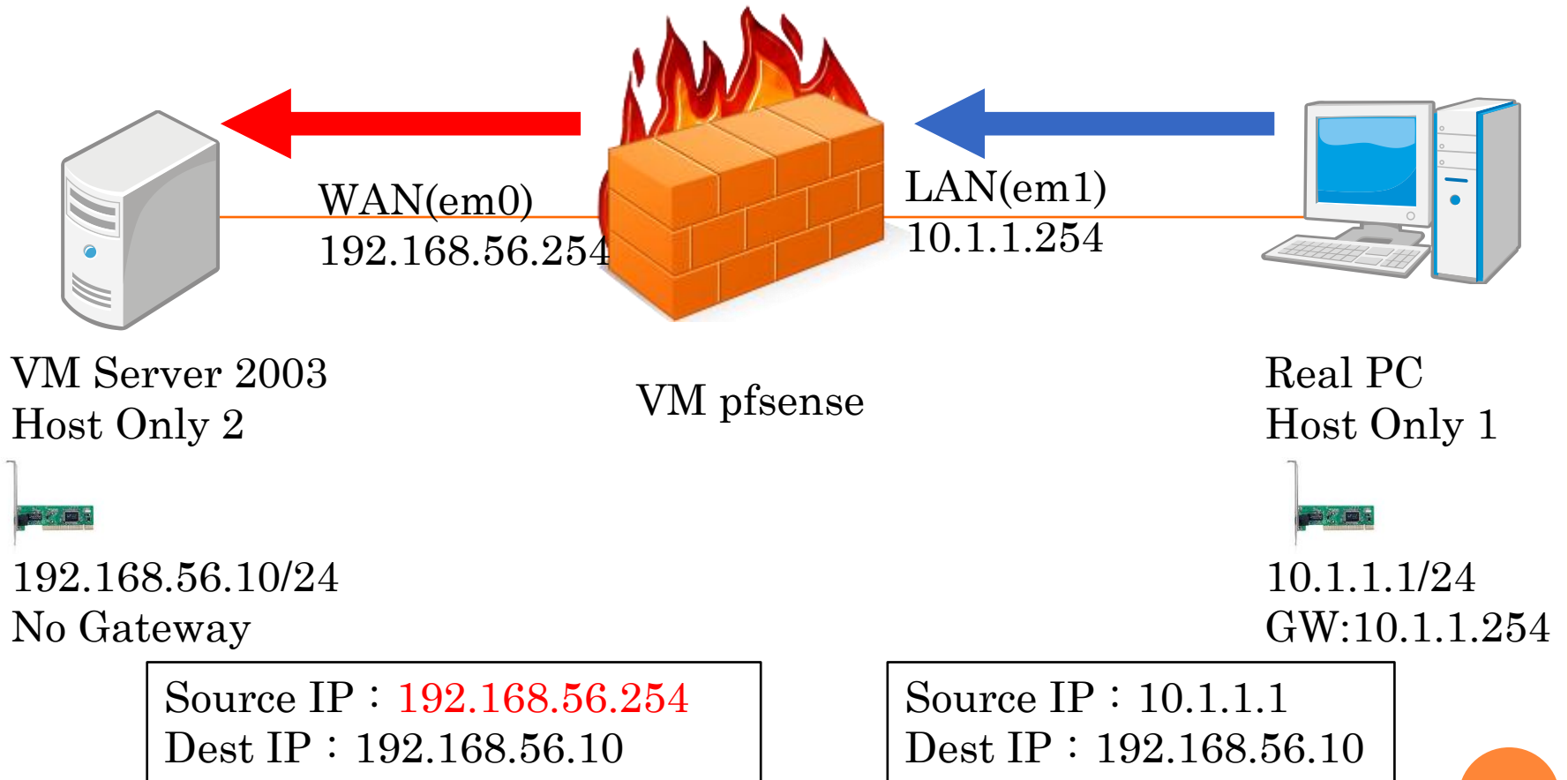


LAB環境-HOST ONLY II

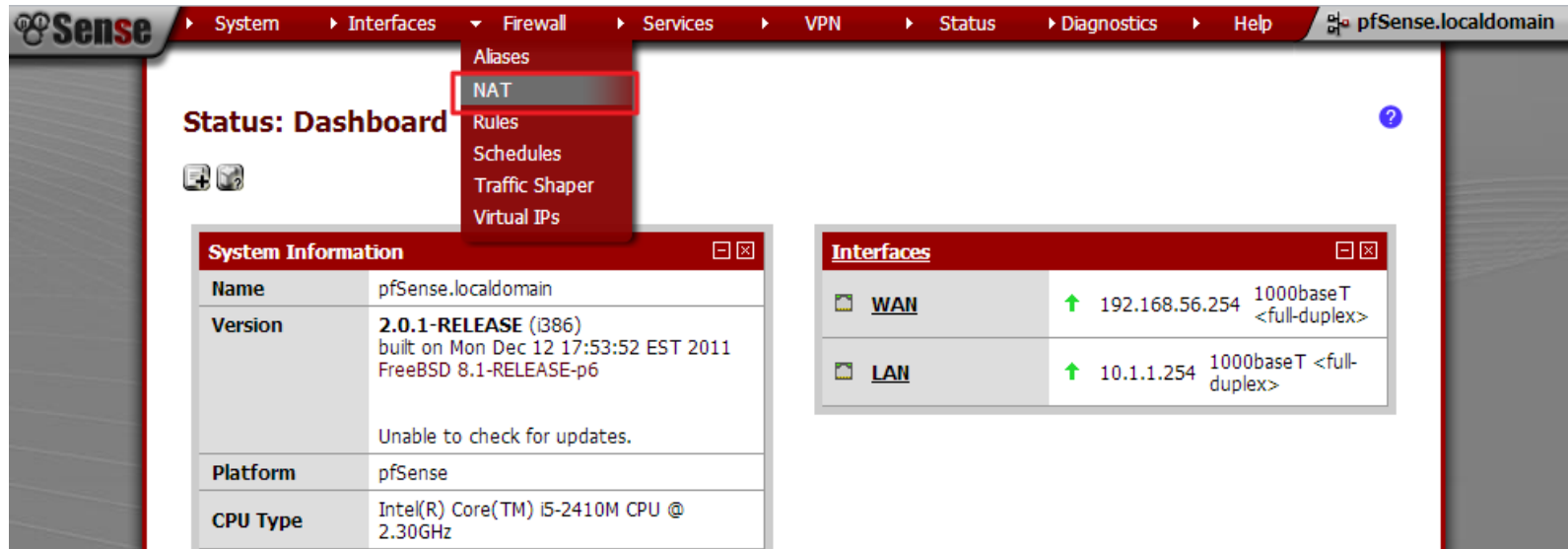
- IP Address : 10.1.1.1
- Netmask : 255.255.255.0
- Static Routing :
 - `route add 192.168.56.0 mask 25.255.255.0 10.1.1.254`



NAT



NAT





The screenshot displays the pfSense web interface. The top navigation bar includes the following items: System, Interfaces, Firewall, Services, VPN, Status, Diagnostics, and Help. The 'Firewall' menu is expanded, showing a list of options: Aliases, NAT (highlighted with a red box), Rules, Schedules, Traffic Shaper, and Virtual IPs. Below the navigation bar, the 'Status: Dashboard' is visible. Two main panels are shown: 'System Information' and 'Interfaces'.

System Information

Name	pfSense.localdomain
Version	2.0.1-RELEASE (386) built on Mon Dec 12 17:53:52 EST 2011 FreeBSD 8.1-RELEASE-p6
	Unable to check for updates.
Platform	pfSense
CPU Type	Intel(R) Core(TM) i5-2410M CPU @ 2.30GHz

Interfaces

 <u>WAN</u>	↑ 192.168.56.254 1000baseT <full-duplex>
 <u>LAN</u>	↑ 10.1.1.254 1000baseT <full-duplex>



NAT

Firewall: NAT: Outbound

Port Forward 1:1 **Outbound**

Mode: Automatic outbound NAT rule generation
(IPsec passthrough included)

**Manual Outbound NAT rule generation
(AON - Advanced Outbound NAT)**

Save

Mappings:

Interface	Source	Source Port	Destination	Destination Port	NAT Address	NAT Port	Static Port	Description
-----------	--------	-------------	-------------	------------------	-------------	----------	-------------	-------------



Note:

With automatic outbound NAT enabled, a mapping is automatically created for each interface's subnet (except WAN-type connections) and the rules on this page are ignored.

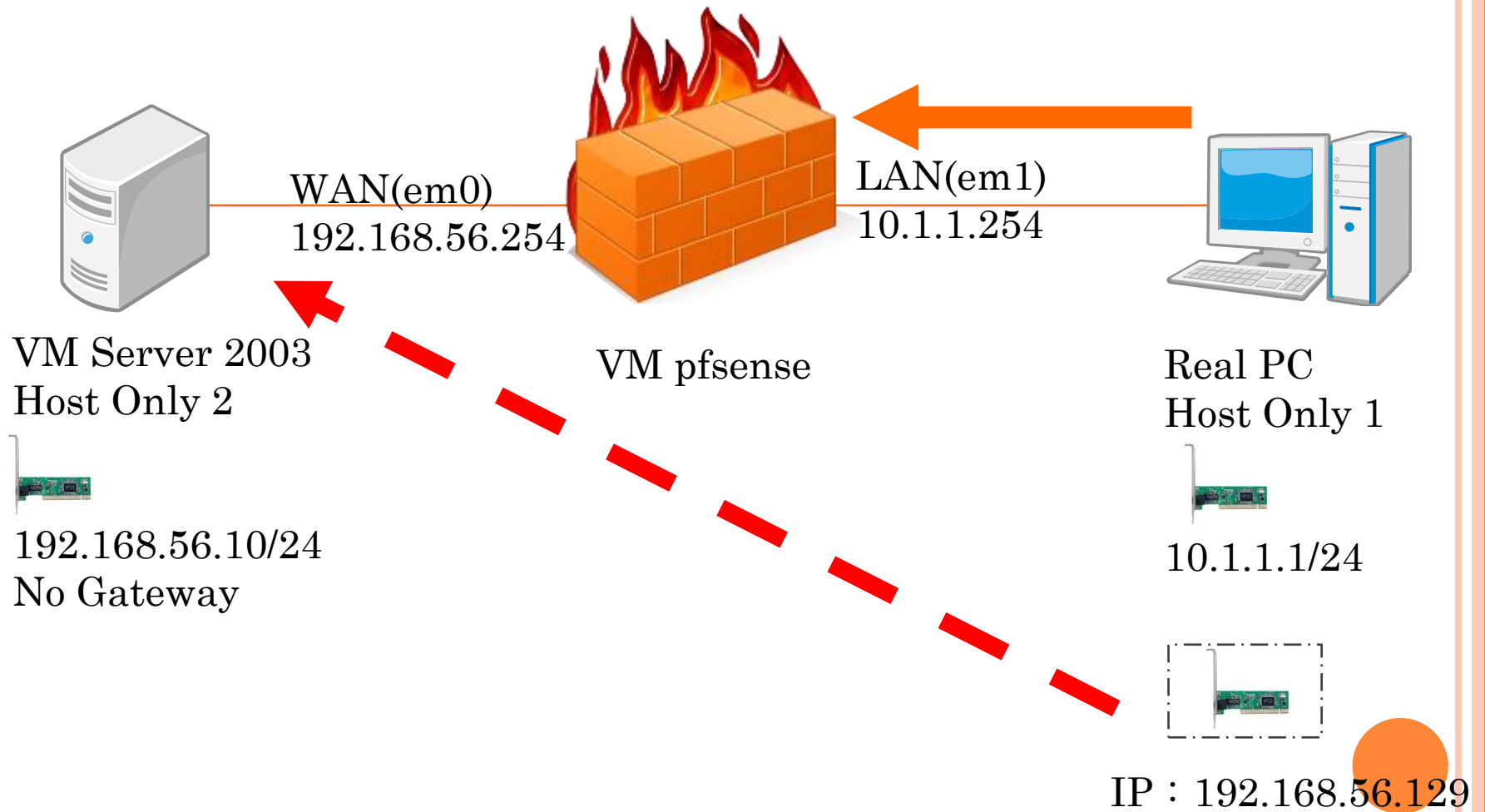
If manual outbound NAT is enabled, outbound NAT rules will not be automatically generated and only the mappings you specify on this page will be used.

If a target address other than a WAN-type interface's IP address is used, then depending on the way the WAN connection is setup, a Virtual IP may also be required.

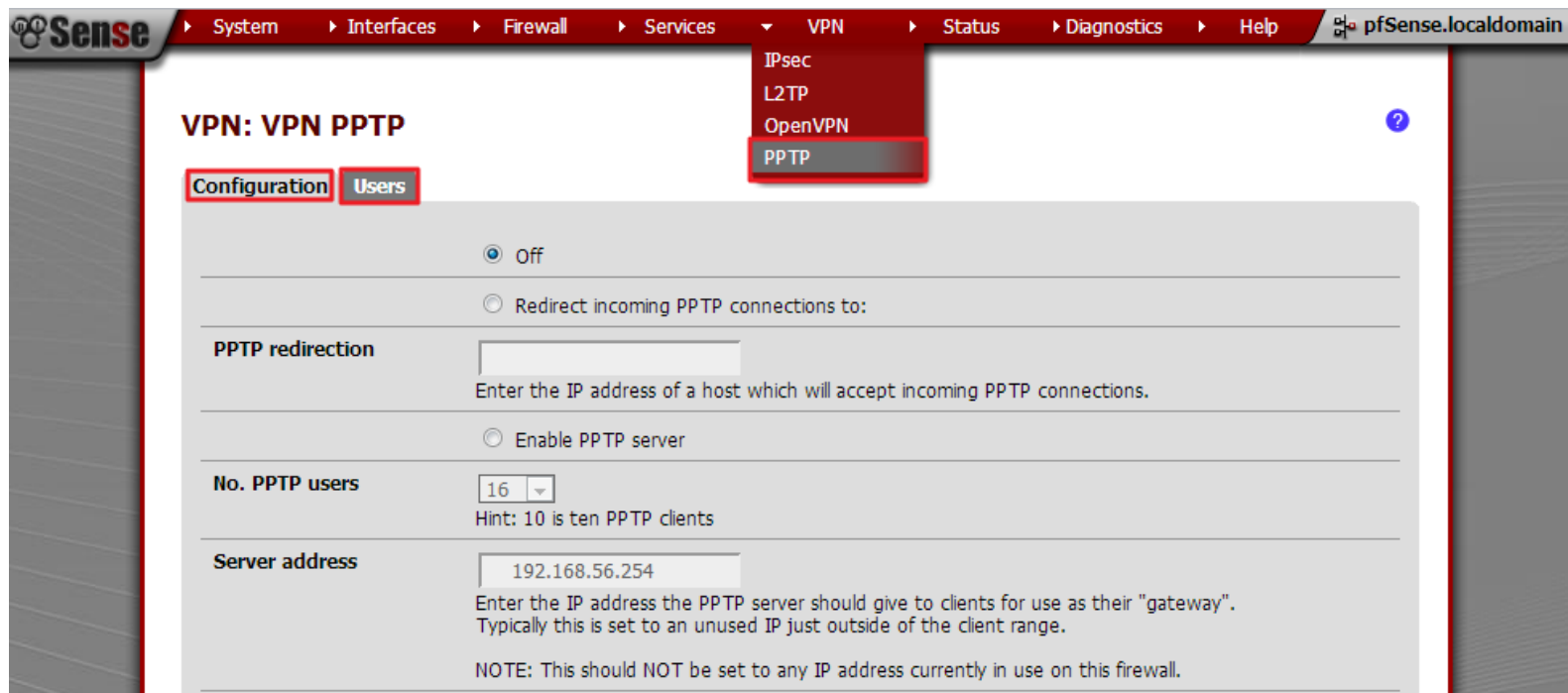
To completely disable outbound NAT, switch to Manual Outbound NAT then delete any NAT rules that appear in the list.



PPTP VPN



PPTP VPN



The screenshot shows the pfSense web interface. The top navigation bar includes 'System', 'Interfaces', 'Firewall', 'Services', 'VPN', 'Status', 'Diagnostics', and 'Help'. The 'VPN' menu is expanded, showing 'IPsec', 'L2TP', 'OpenVPN', and 'PPTP'. The 'PPTP' option is selected. The main content area is titled 'VPN: VPN PPTP' and has two tabs: 'Configuration' and 'Users'. The 'Configuration' tab is active. It contains several settings: a radio button for 'Off' (selected), a radio button for 'Redirect incoming PPTP connections to:' with an empty text input field below it, a radio button for 'Enable PPTP server', a dropdown menu for 'No. PPTP users' set to '16', and a text input field for 'Server address' set to '192.168.56.254'. A note at the bottom states: 'NOTE: This should NOT be set to any IP address currently in use on this firewall.'

Sense

System > Interfaces > Firewall > Services > VPN > Status > Diagnostics > Help pfSense.localdomain

VPN: VPN PPTP

Configuration Users

Off

Redirect incoming PPTP connections to:

PPTP redirection

Enter the IP address of a host which will accept incoming PPTP connections.

Enable PPTP server

No. PPTP users

16

Hint: 10 is ten PPTP clients

Server address

192.168.56.254

Enter the IP address the PPTP server should give to clients for use as their "gateway". Typically this is set to an unused IP just outside of the client range.

NOTE: This should NOT be set to any IP address currently in use on this firewall.

