

Theory of Computer Games (Fall 2021) Homework 2 Review

NTU CSIE

December 21, 2021

Outline

- 1 Score
- 2 Implementation
- 3 Test Boards

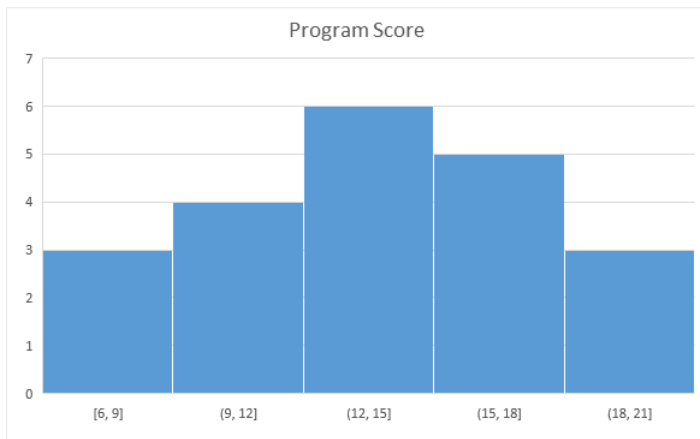
Grading Policy

Grading Policy

$$\text{Your Point} = P \times \left(\frac{\text{Your Score}}{\text{Boss Score}} \times W_1 + \text{Report Score} \times W_2 - M \right) \times D$$

- P : 25
- Your Score : $\in [0, 26]$
- Boss Score : 17.84 (Test Boards)
- W_1 : 0.8
- Report Score : $\in [0, 1]$
- W_2 : 0.2
- M : $0.06 \times \#$ of missing requirements
- D : $(1 - 0.1 \times \#$ of days late)

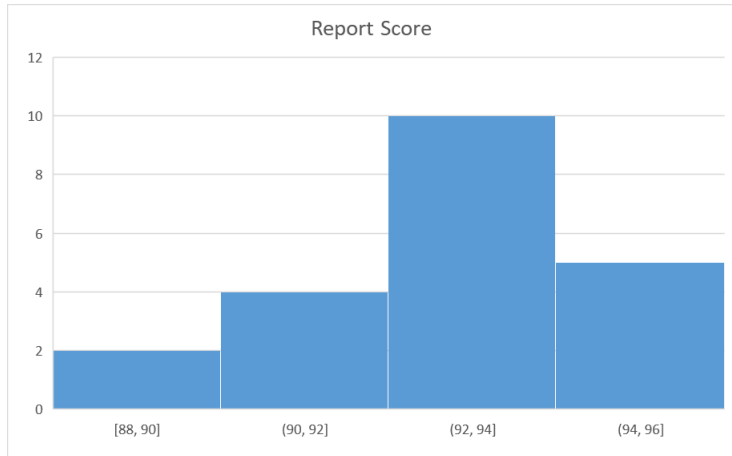
Program Score Distribution



Statistic

- Average: 13.54
- Standard Deviation: 4.1

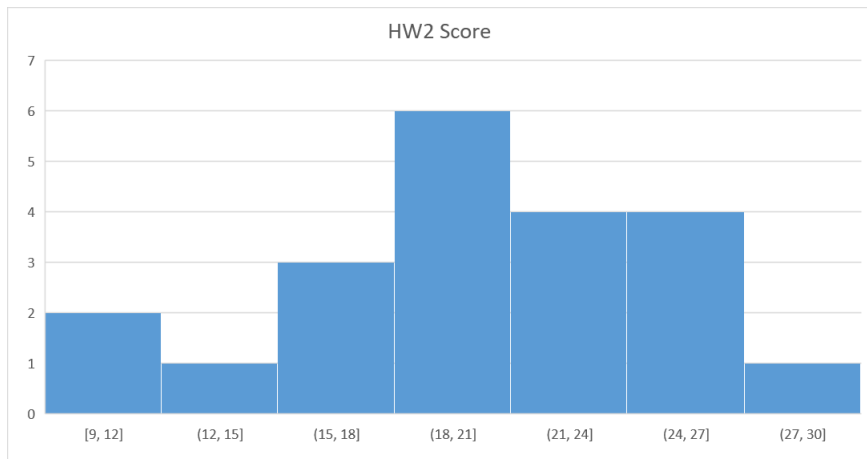
Report Score Distribution



Statistic

- Average: 93
- Standard Deviation: 2.1

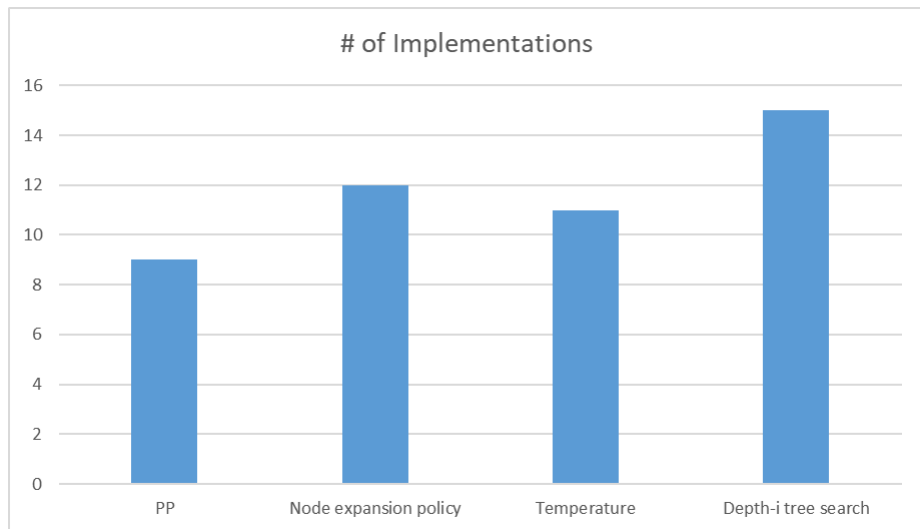
HW2 Score Distribution



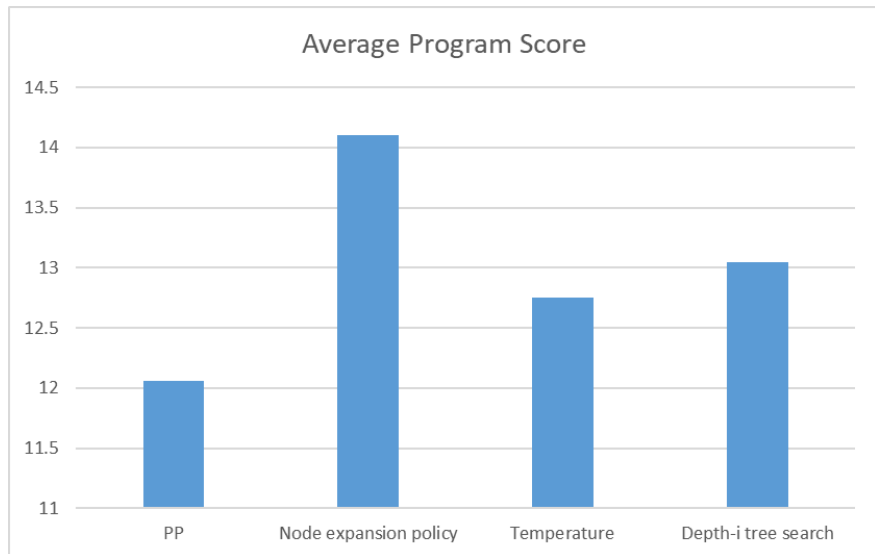
Statistic

- Average: 19.58
- Standard Deviation: 4.9

Implementation



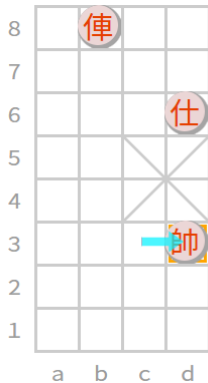
Implementation



0 (Sample 0)



0



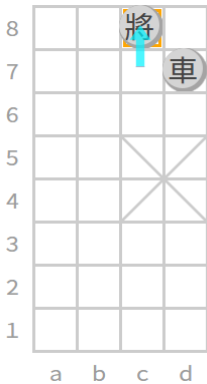
1.17 (W)



1.19 (W)



1



1.13 (W)



1.10 (W)

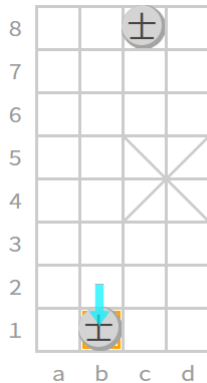
2 (Sample 1)



2



1.09 (W)



1.08 (W)



3



1.23 (W)



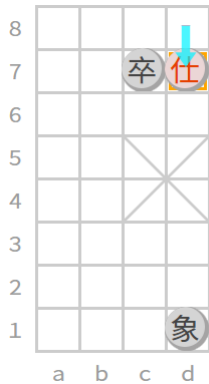
0.2 (D)



4



1.07 (W)



0.2 (D)

5 (Sample 5)



5



1.07 (W)



1.18 (W)

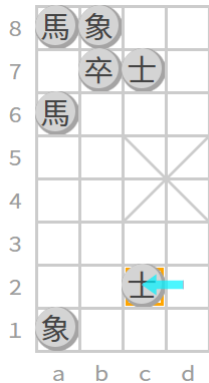
6 (Sample 7)



6



1.06 (W)



1.11 (W)



7



0.2 (D)



1.27 (W)

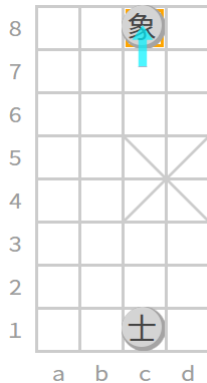
8 (Sample 9)



8



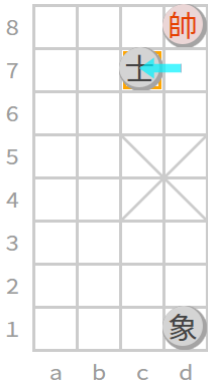
0.2 (D)



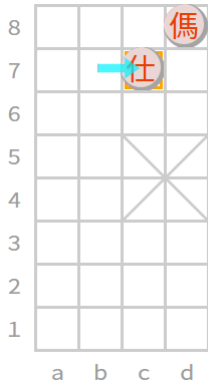
1.06 (W)



9



0.2 (D)



1.04 (W)