

Announcements

- Project #2 was due yesterday.
- Project #3 will be assigned next Wednesday.
- Grading proportion change. (15%,20%,20%,30%)

Matting and compositing

Digital Visual Effects, Spring 2005

Yung-Yu Chuang

2005/4/27

Outline

- Traditional matting and compositing
- Natural image matting
- Video matting
- Shadow matting
- Environment matting

*Traditional matting
and compositing*

Photomontage



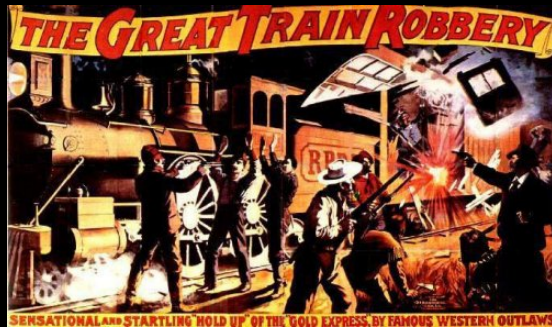
The Two Ways of Life, 1857, Oscar Gustav Rejlander
Printed from the original 32 wet collodion negatives.

Photographic compositions



Lang Ching-shan

Use of mattes for compositing



The Great Train Robbery (1903) matte shot

Use of mattes for compositing



The Great Train Robbery (1903) matte shot

Optical compositing



King Kong (1933) Stop-motion + optical compositing

Digital matting and compositing

The lost world (1925)



Miniature, stop-motion

The lost world (1997)



Computer-generated images

Digital matting and compositing

King Kong (1933)



Optical compositing

Jurassic Park III (2001)



Blue-screen matting,
digital composition,
digital matte painting

Digital matting: bluescreen matting



Forrest Gump (1994)

- The most common approach for films.
- Expensive, studio setup.
- Not a simple one-step process.



Titanic

Matting and compositing



background replacement



background editing



Matting and Compositing

Color difference method (Ultimate)

$$C = F + \bar{\alpha}B$$

F

$\bar{\alpha}$



Blue-screen photograph

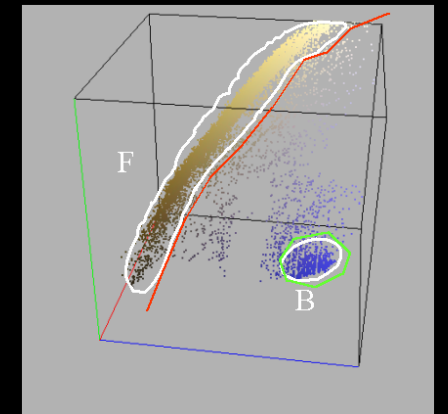


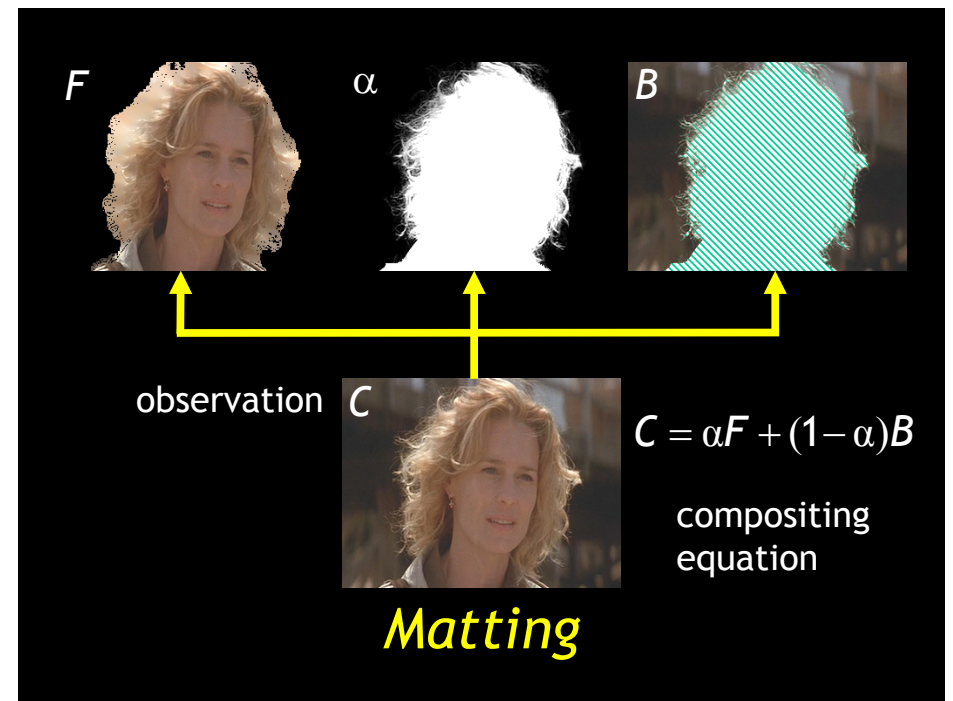
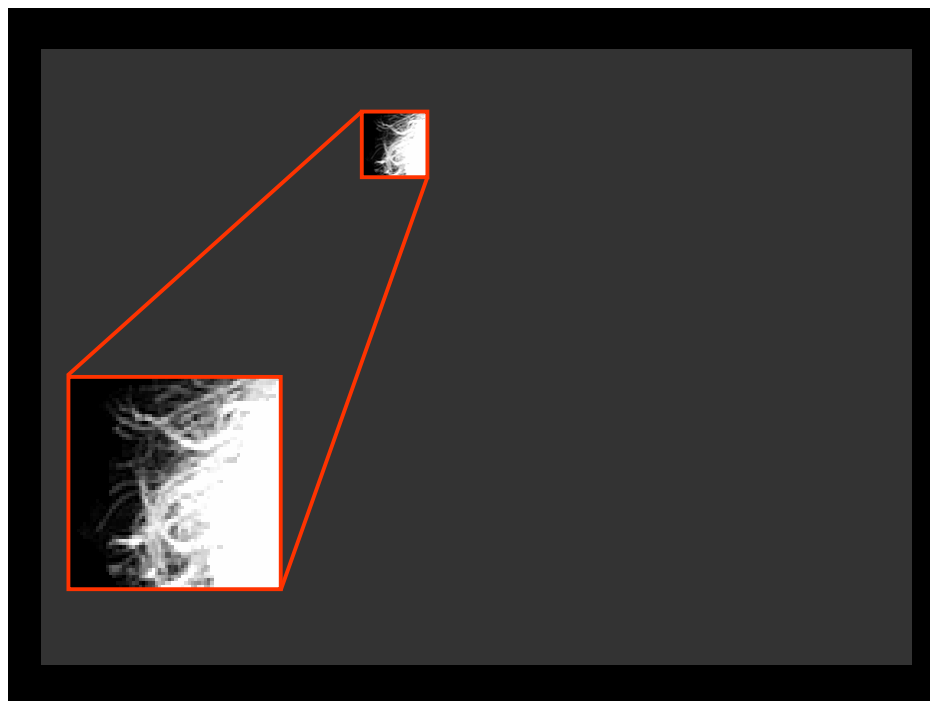
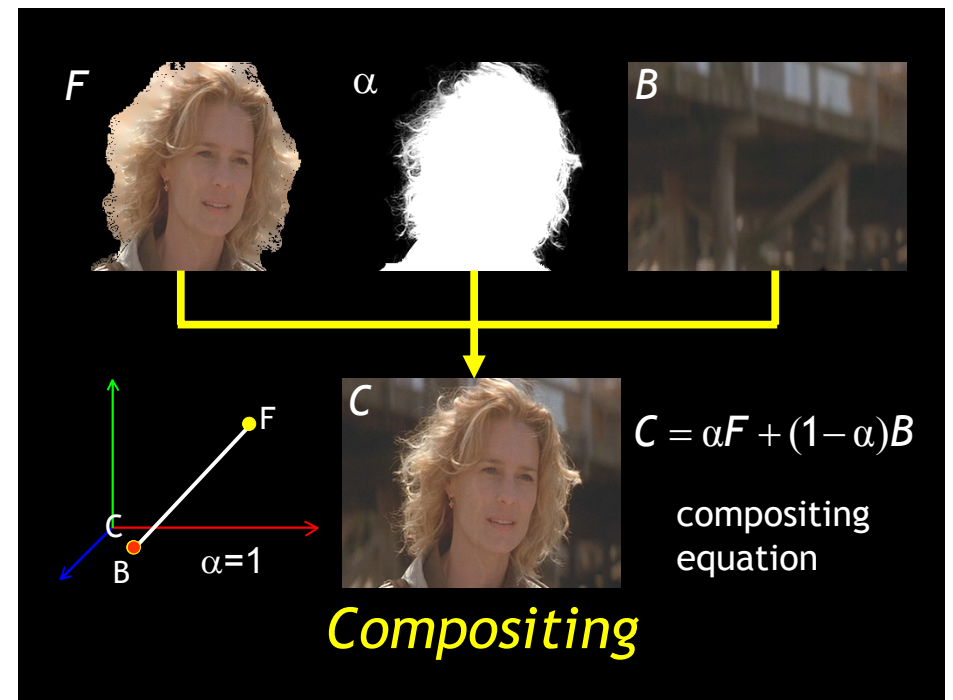
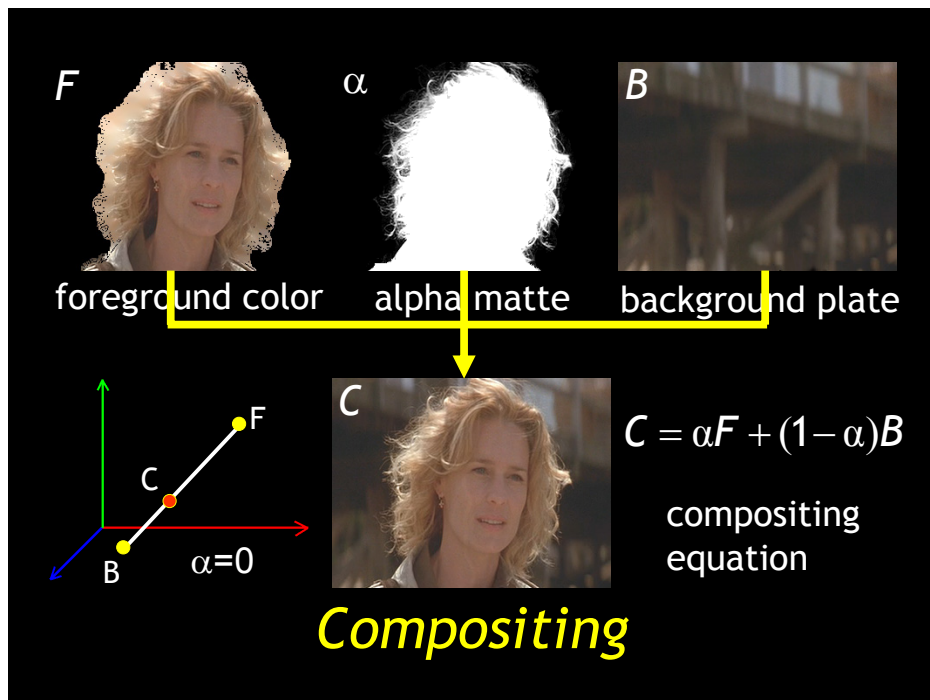
Spill suppression if $B > G$ then $B = G$



Matte creation $\bar{\alpha} = B - \max(G, R)$

Chroma-keying (Primatte)





Three approaches:

- 1 reduce #unknowns
- 2 add observations
- 3 add priors

$C = \alpha F + (1 - \alpha) B$
compositing equation

Matting

$C = \alpha F + (1 - \alpha) B$
difference matting

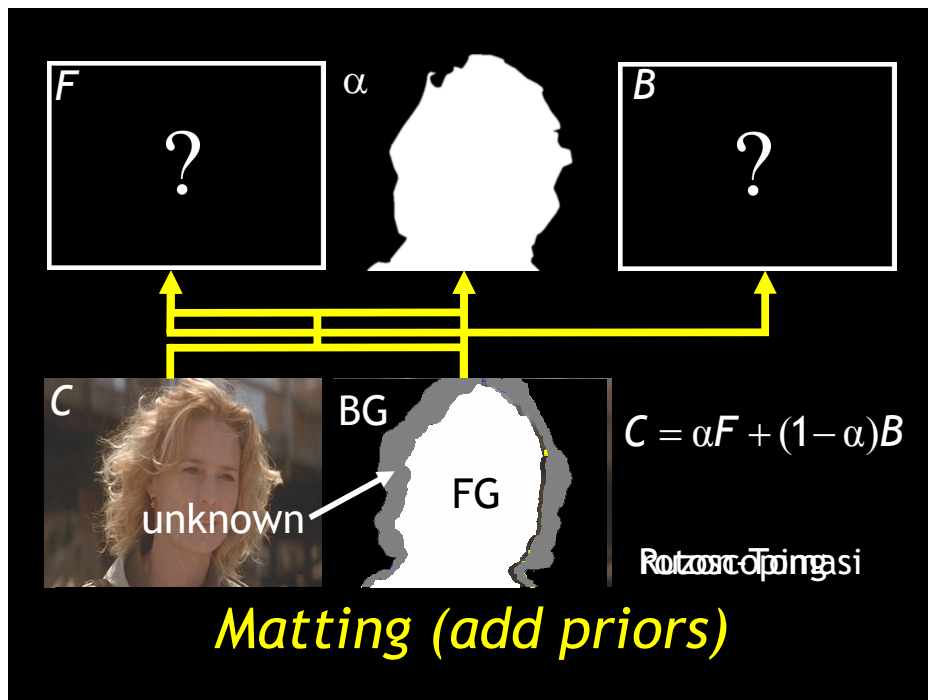
Matting (reduce #unknowns)

$C = \alpha F + (1 - \alpha) B$
blue screen matting

Matting (reduce #unknowns)

$C = \alpha F + (1 - \alpha) B$
 $C = \alpha F + (1 - \alpha) B$
triangulation

Matting (add observations)



Bayesian image matting

posterior probability

likelihood

priors

$$\arg \max_{F, B, \alpha} P(F, B, \alpha | C)$$

$$= \arg \max_{F, B, \alpha} P(C | F, B, \alpha) P(F) P(B) P(\alpha) / P(C)$$

$$L(C | F, B, \alpha) = -\|C - \alpha F - (1 - \alpha) B\|^2 / \sigma_C^2$$

Bayesian framework

$$\bar{F} = \frac{1}{W} \sum_{i \in N} w_i F_i$$

$$\Sigma_F = \frac{1}{W} \sum_{i \in N} w_i (F_i - \bar{F})(F_i - \bar{F})^T$$

Background

Unknown

Foreground

Computed

$$L(F) = -(F - \bar{F})^T \Sigma_F^{-1} (F - \bar{F}) / 2$$

Priors

repeat

1. fix alpha

$$\begin{bmatrix} \Sigma_F^{-1} + I\alpha^2/\sigma_C^2 & I\alpha(1-\alpha)/\sigma_C^2 \\ I\alpha(1-\alpha)/\sigma_C^2 & \Sigma_B^{-1} + I(1-\alpha)^2/\sigma_C^2 \end{bmatrix} \begin{bmatrix} F \\ B \end{bmatrix} \\ = \begin{bmatrix} \Sigma_F^{-1}\bar{F} + C\alpha/\sigma_C^2 \\ \Sigma_B^{-1}\bar{B} + C(1-\alpha)/\sigma_C^2 \end{bmatrix}$$

2. fix F and B

$$\alpha = \frac{(C - B) \cdot (F - B)}{\|F - B\|^2}$$

until converge

Optimization



Bayesian image matting



Bayesian image matting



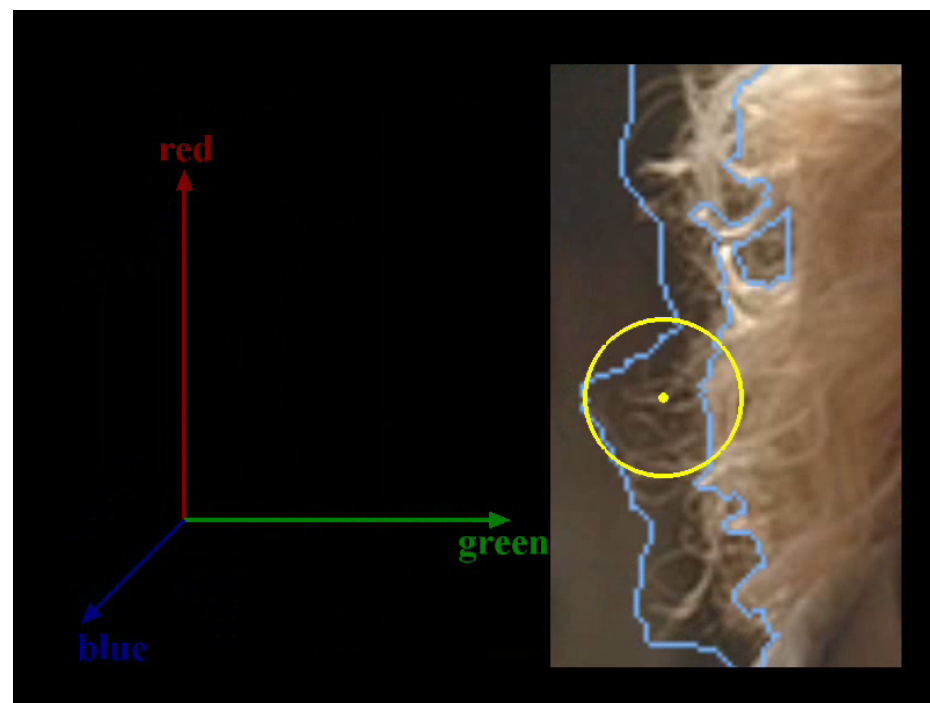
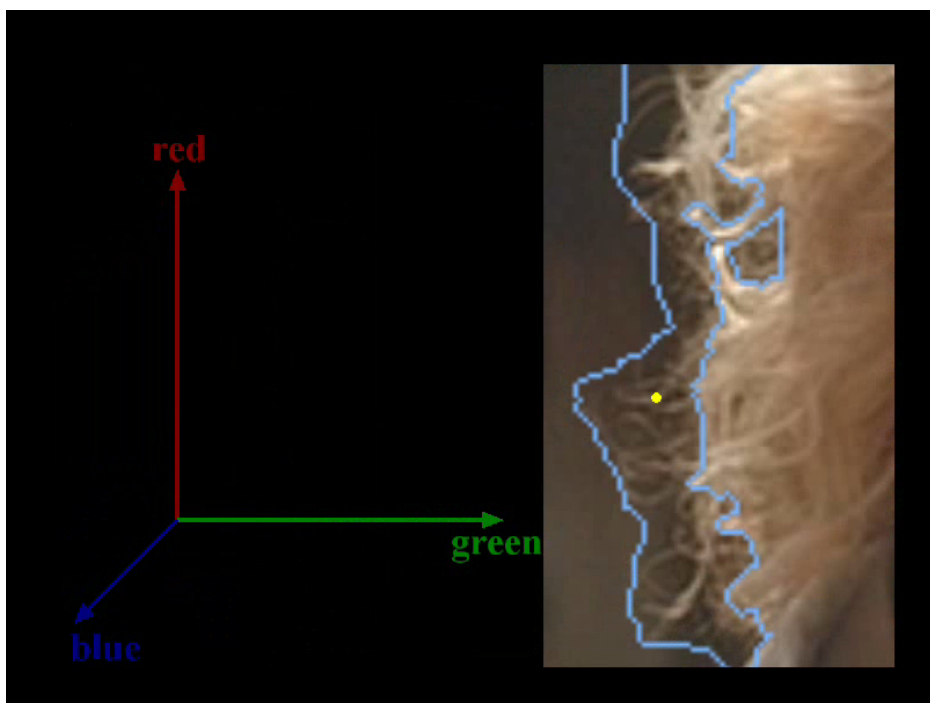
Bayesian image matting

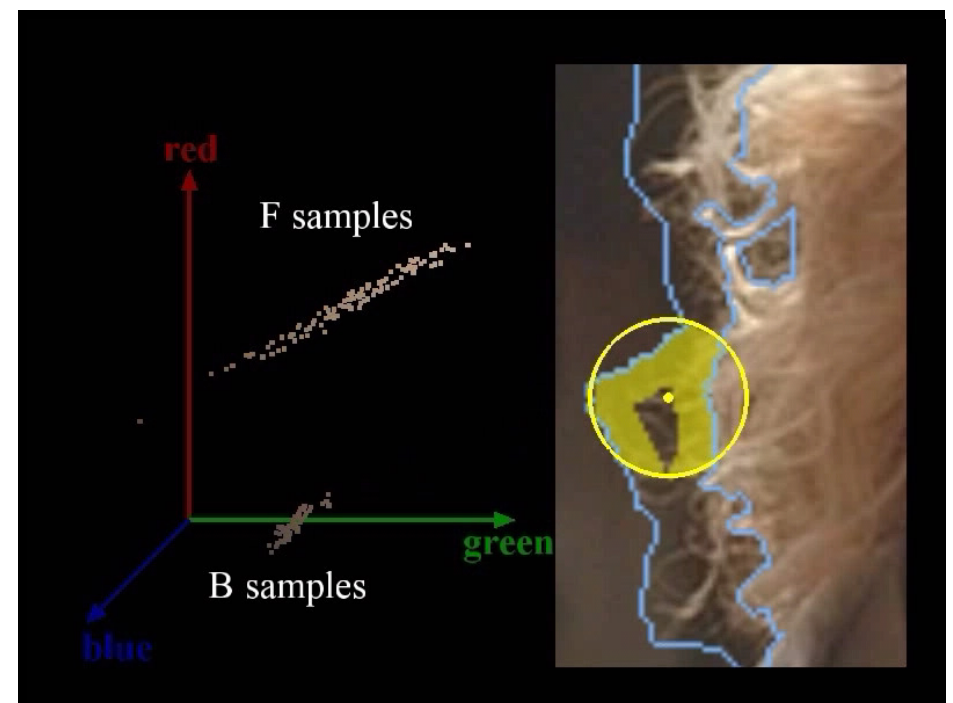
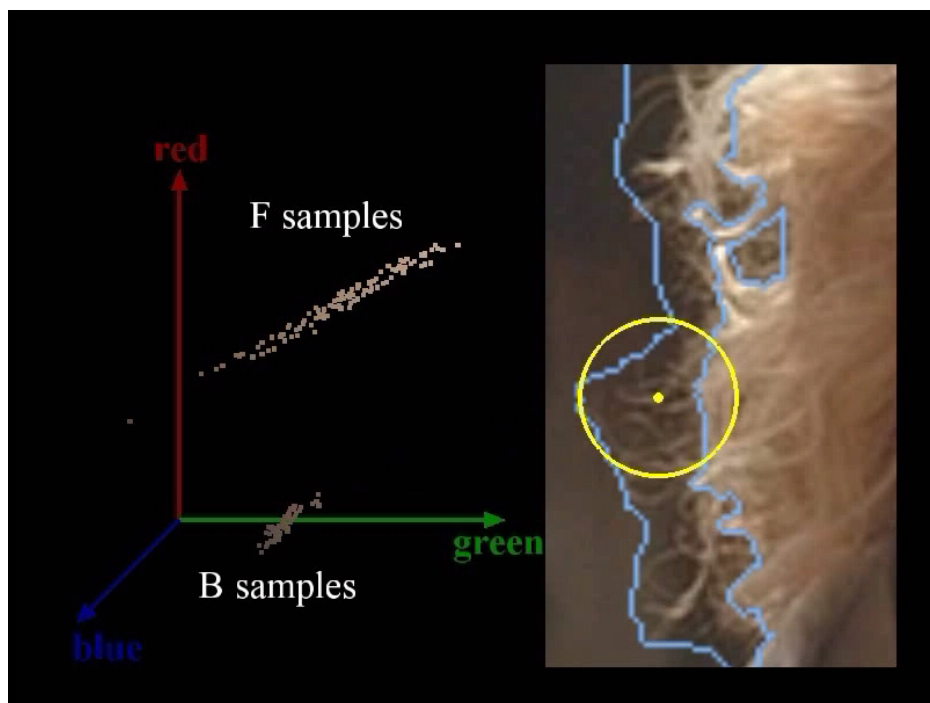
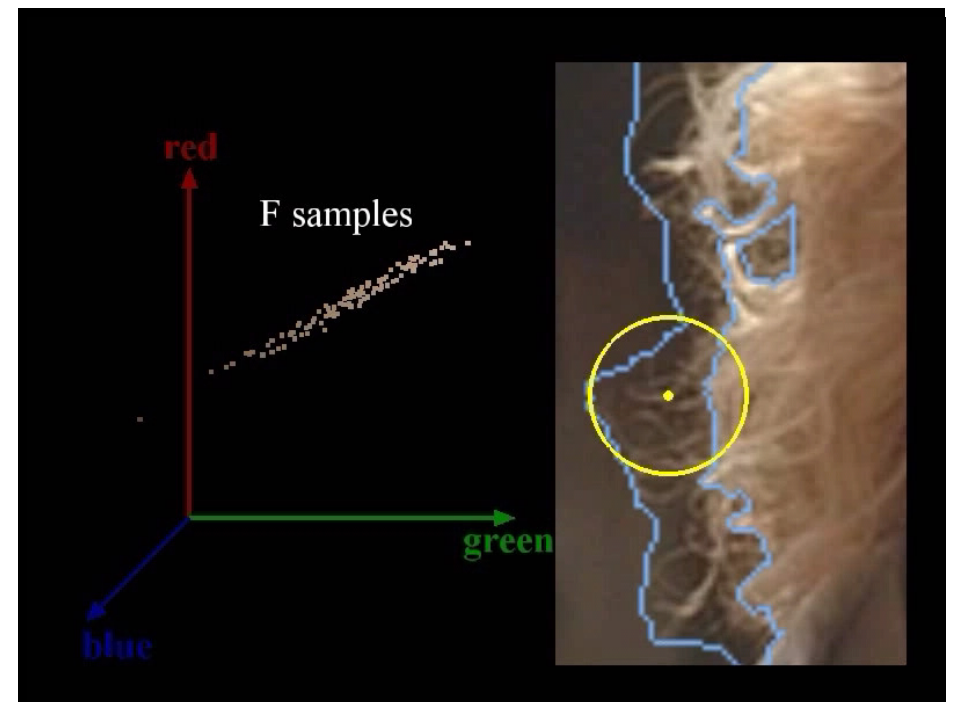
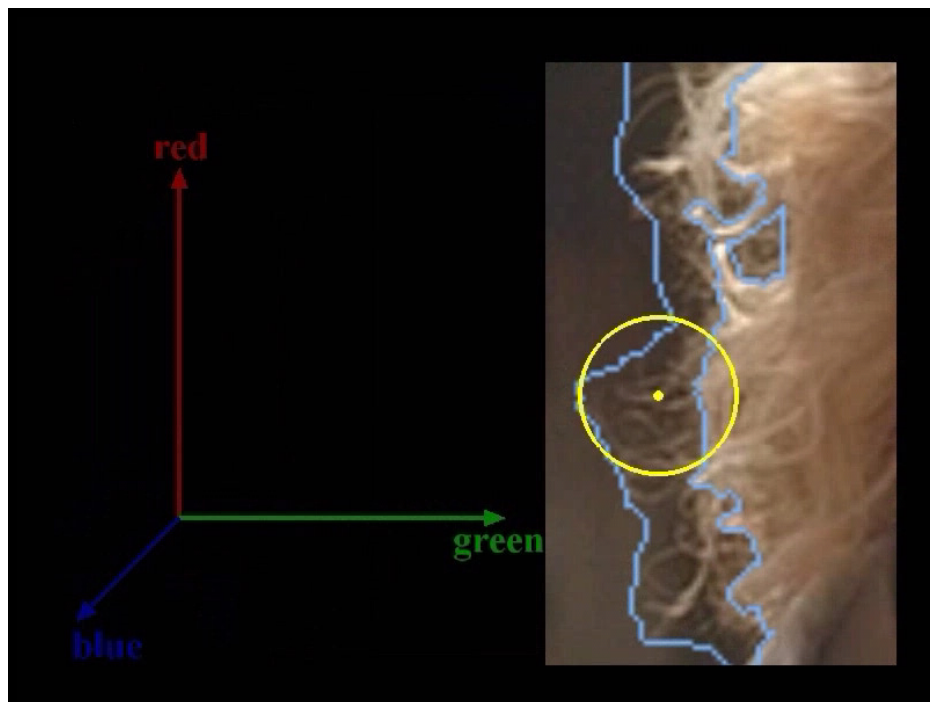


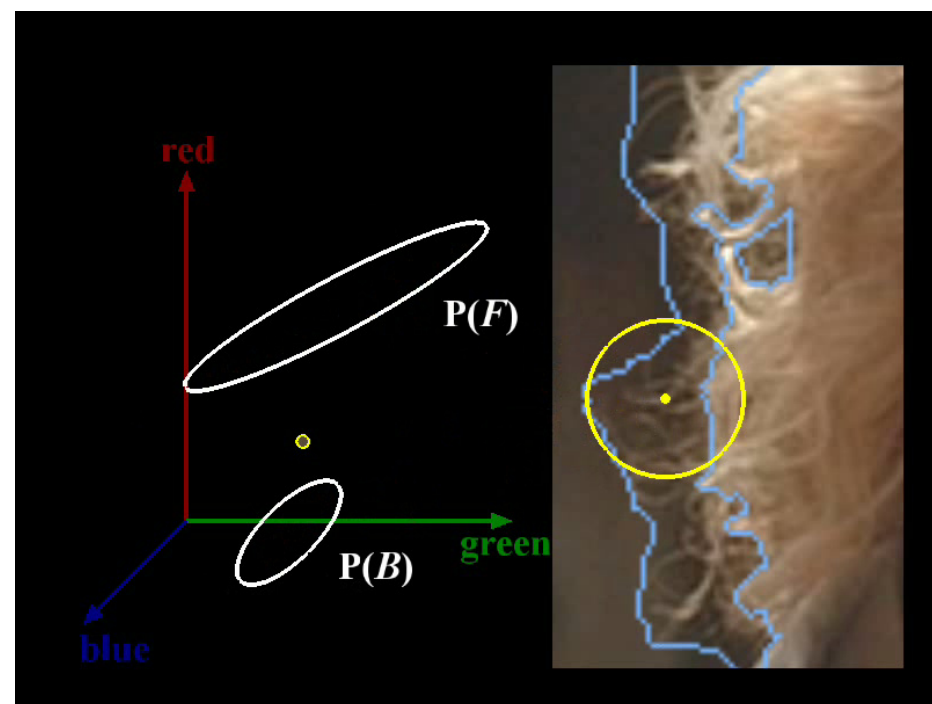
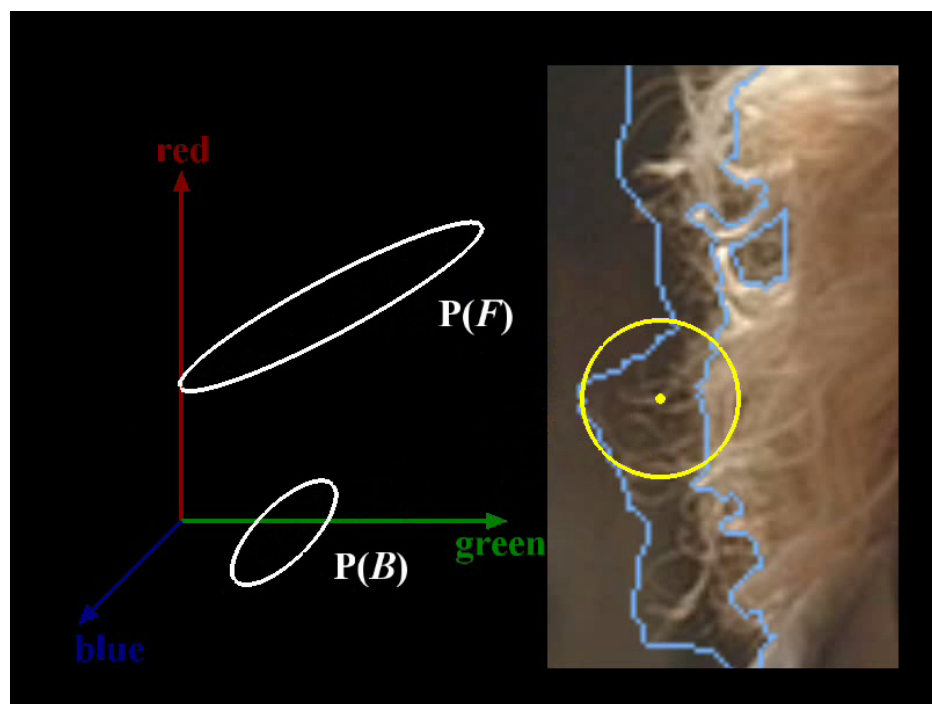
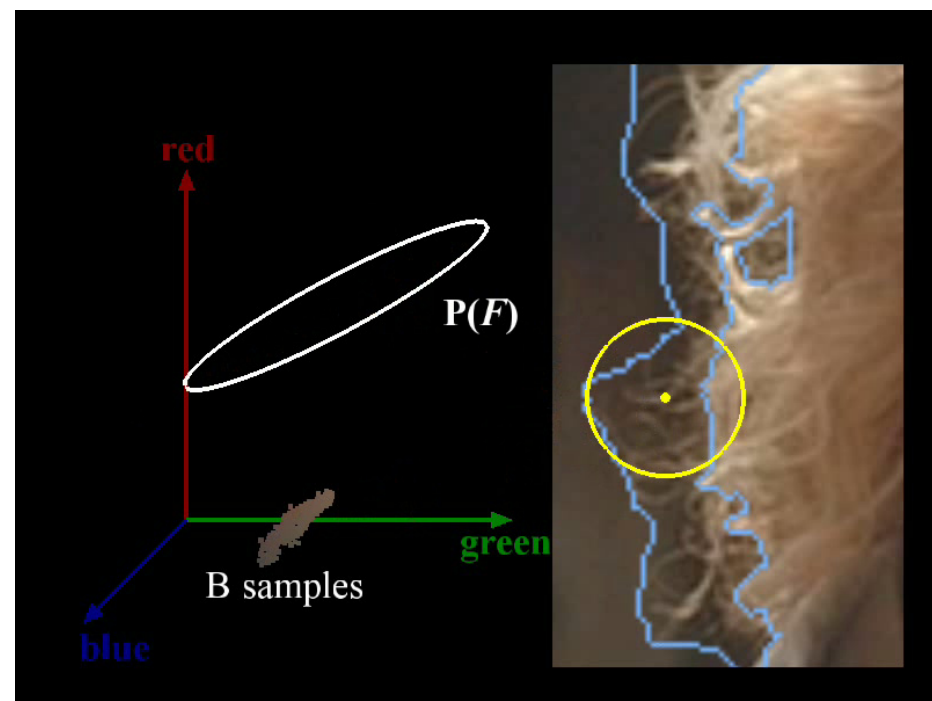
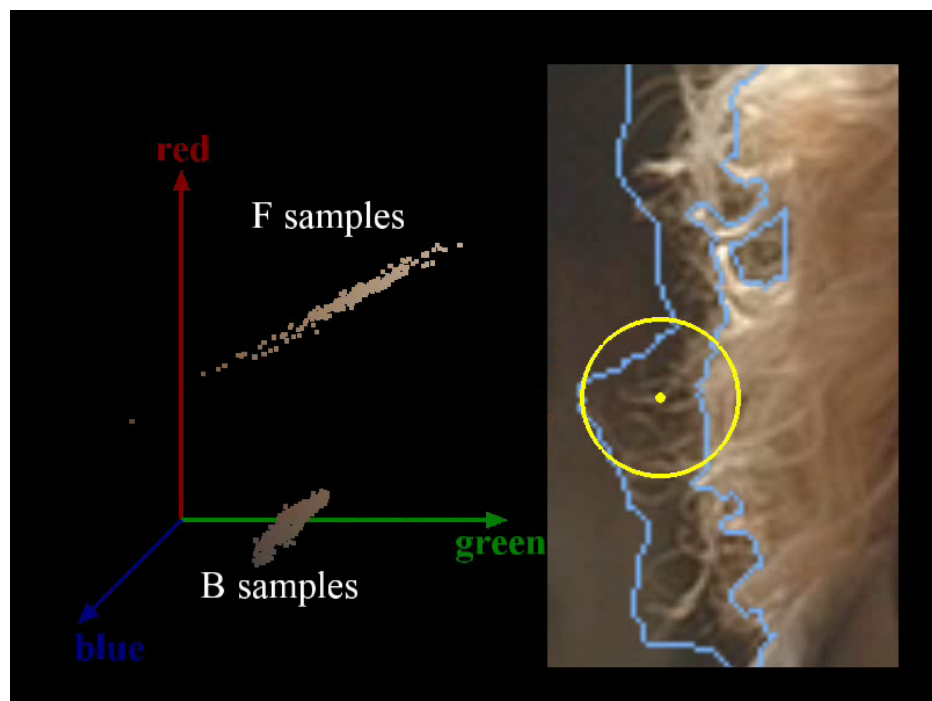
Bayesian image matting

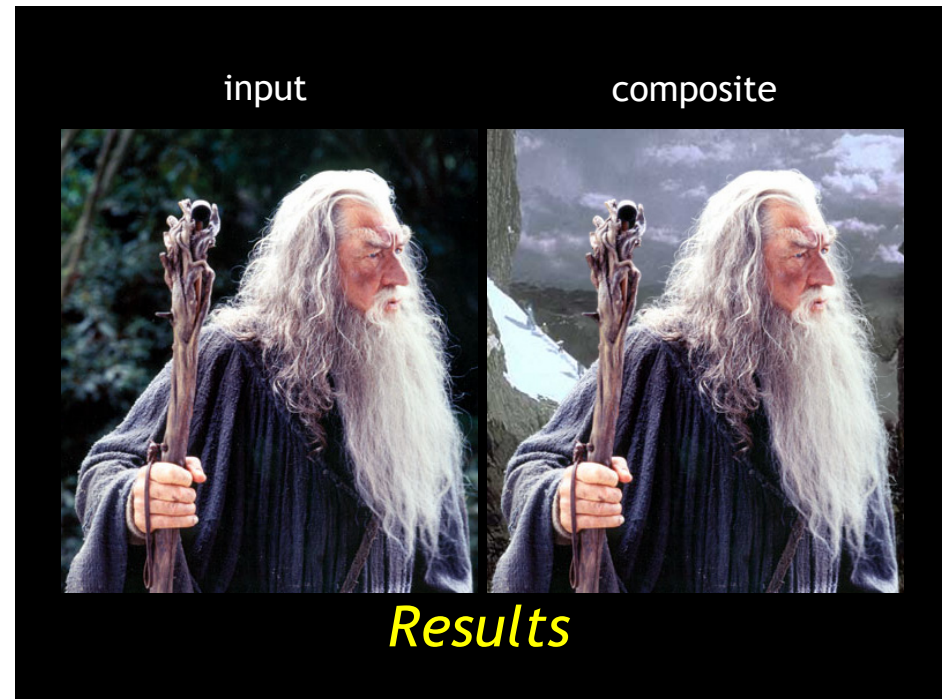
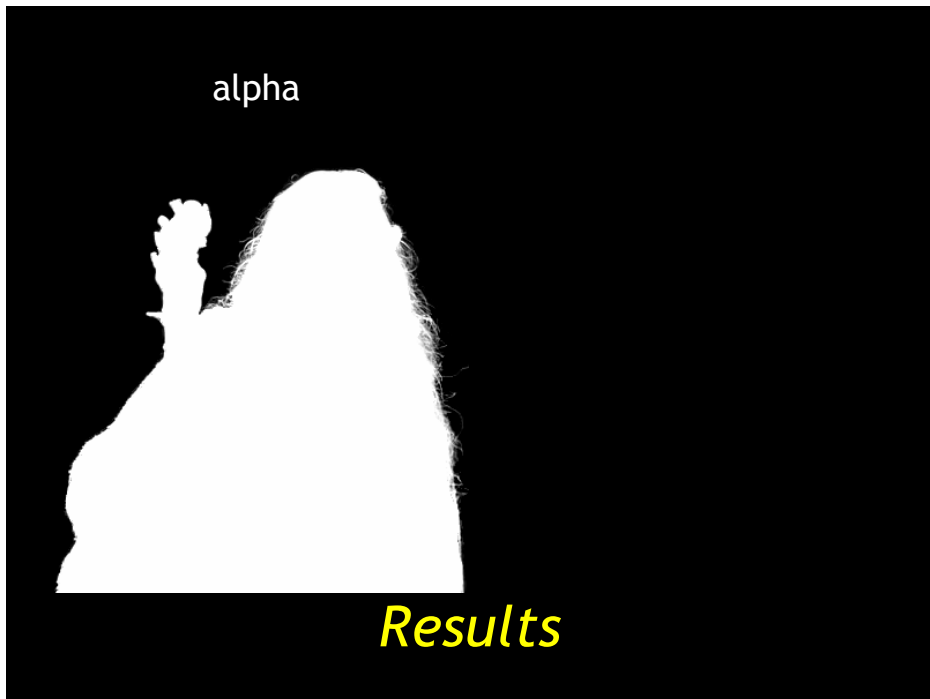
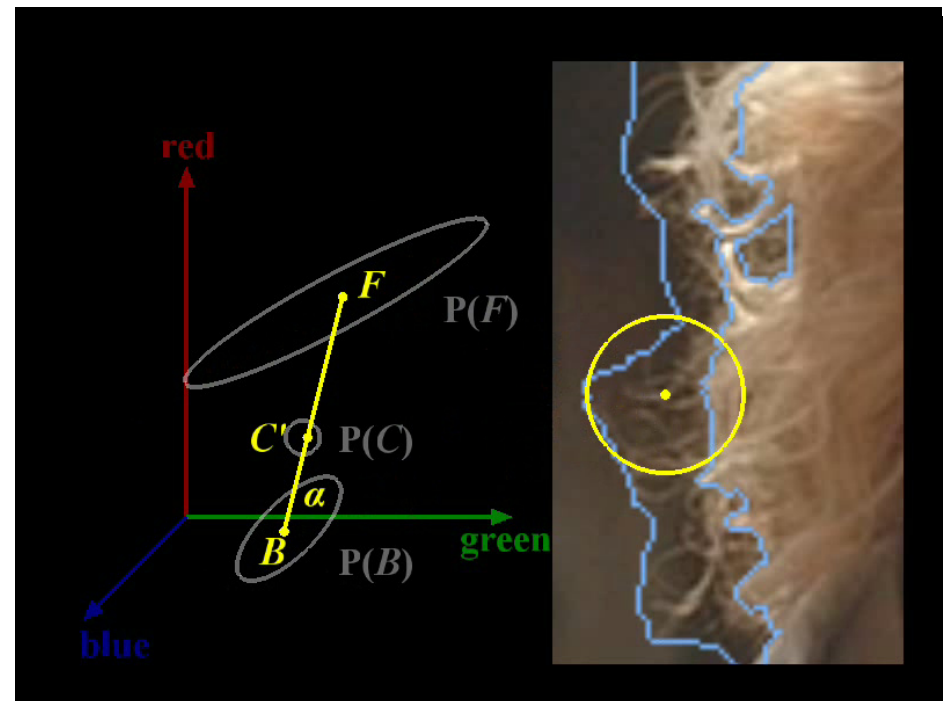
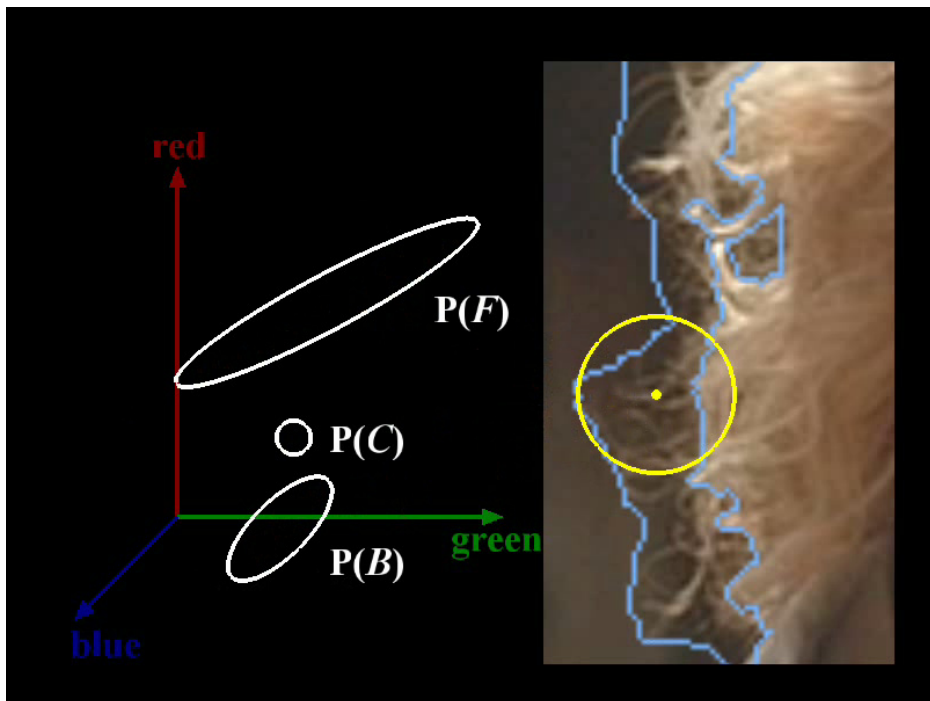


Bayesian image matting

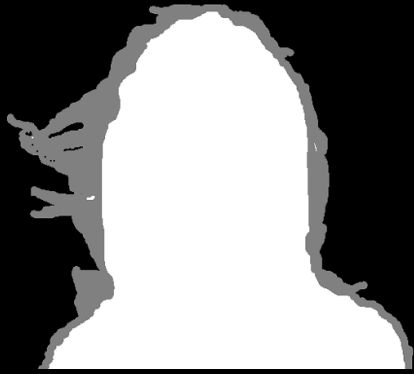








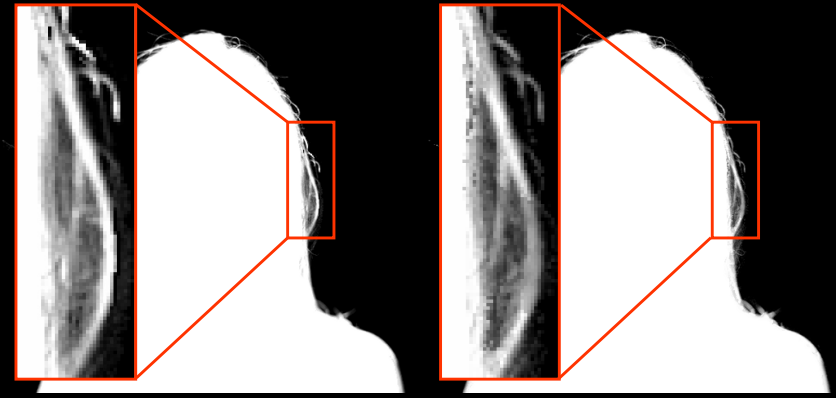
trimap



Comparisons

Bayesian

Ruzon-Tomasi



Comparisons

Bayesian

Ruzon-Tomasi



Comparisons

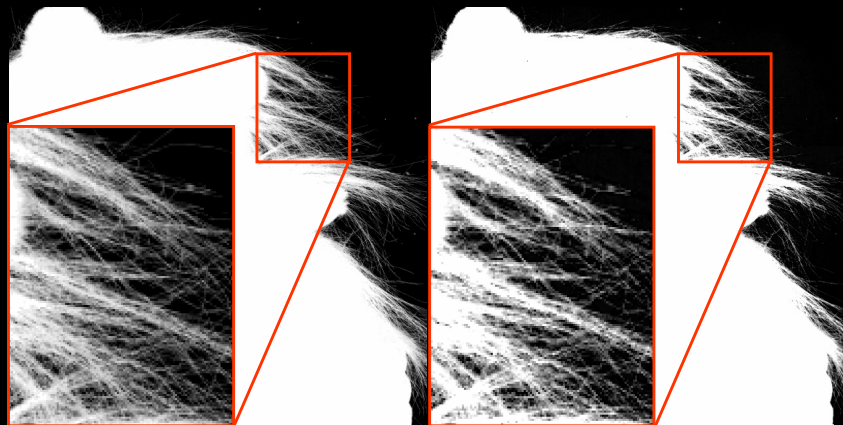
input image



Comparisons

Bayesian

Mishima



Comparisons

Bayesian

Mishima



Comparisons

Video matting

input
video



Video matting

input
video



input
key
trimaps



Video matting

input
video



interpo-
lated
trimaps



Video matting

input
video



interpo-
lated
trimaps



output
alpha

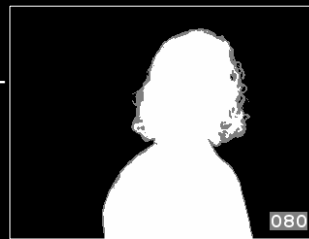


Video matting

input
video



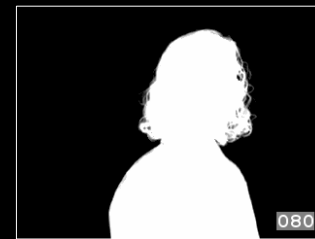
interpo-
lated
trimaps



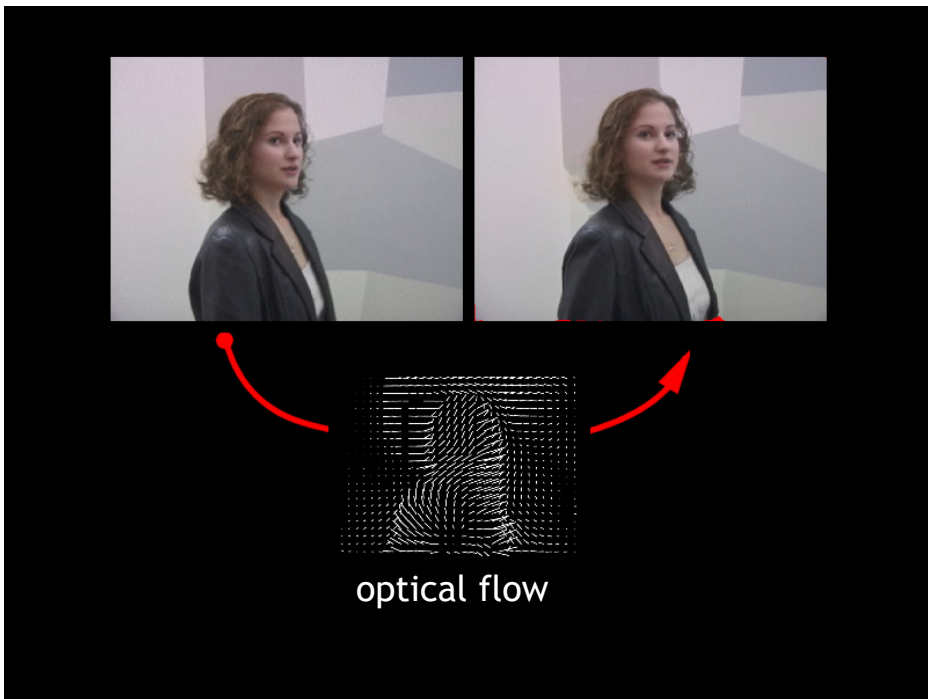
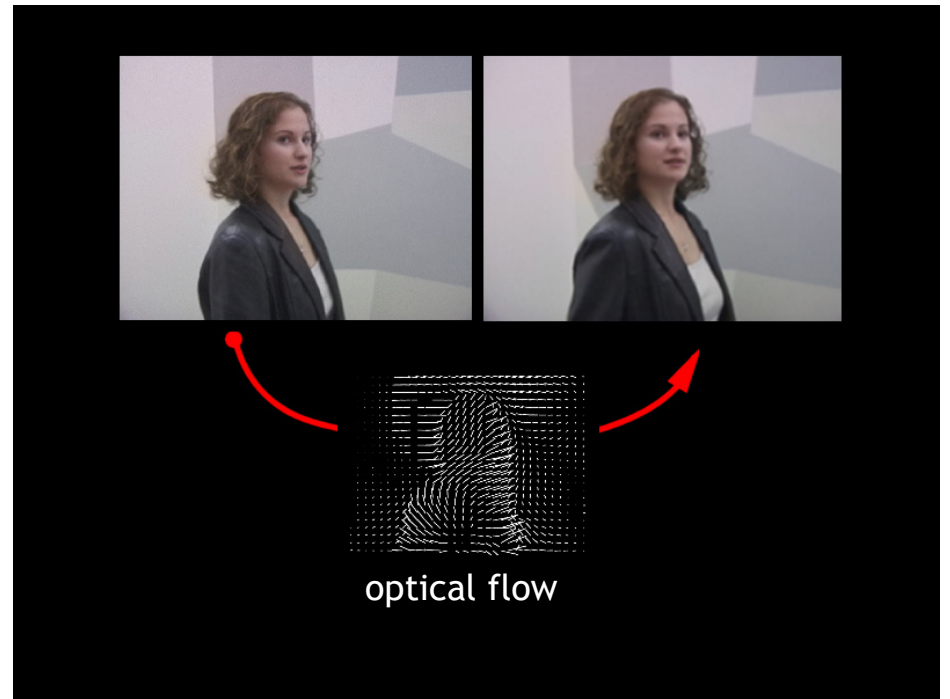
Compo-
site



output
alpha



Video matting

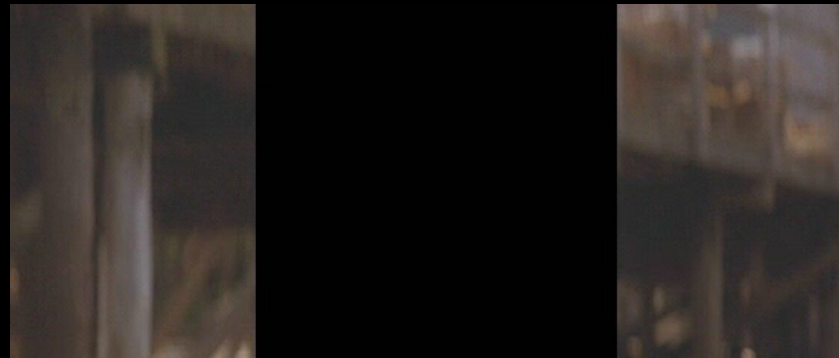








Garbage mattes



Garbage mattes



Background estimation



Background estimation



Alpha matte



*without
background*



*with
background*

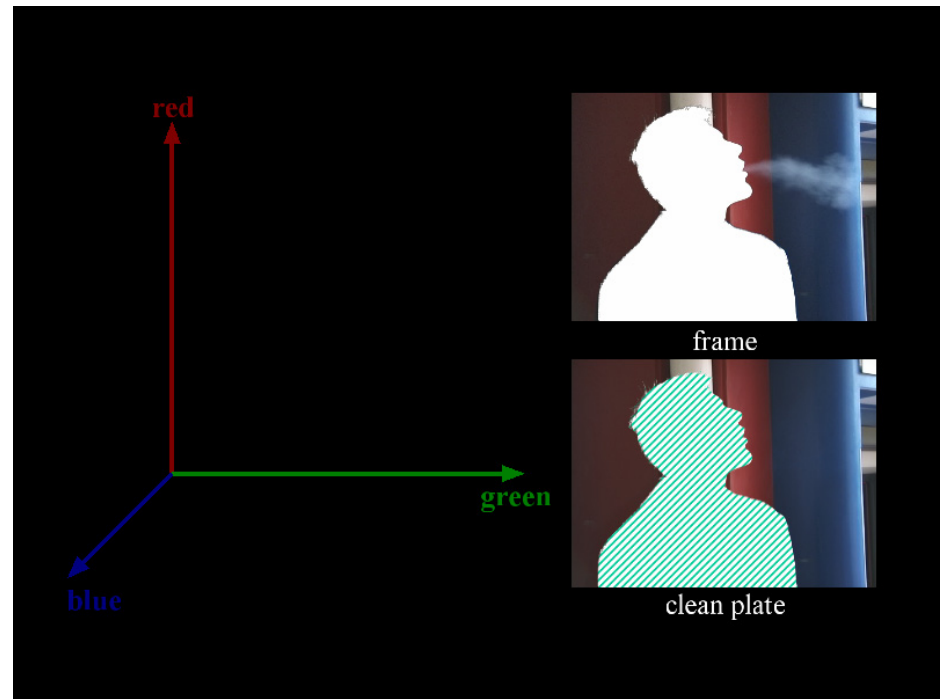
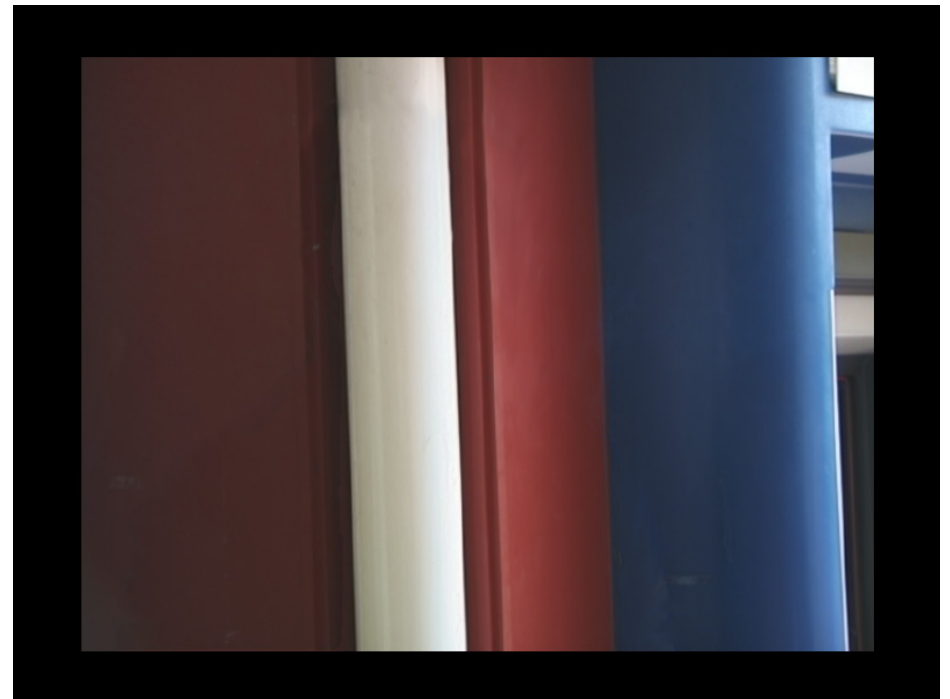
Comparison

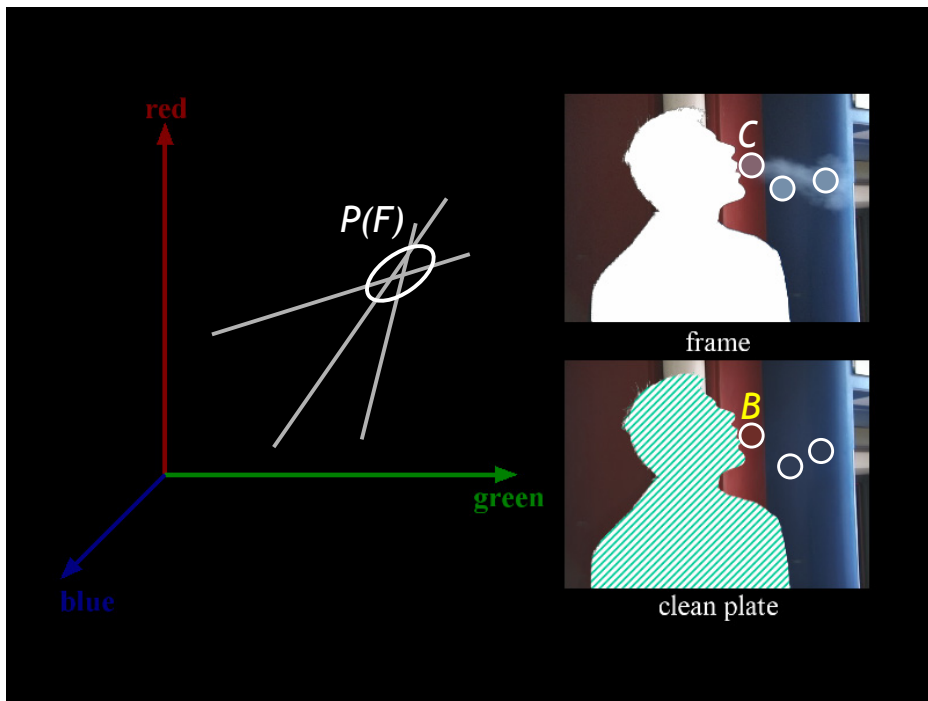
input



composite







*Shadow matting
and compositing*

source scene



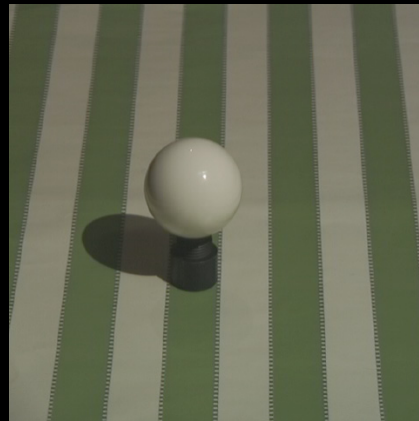
target background



blue screen image



target background



blue screen composite



target background



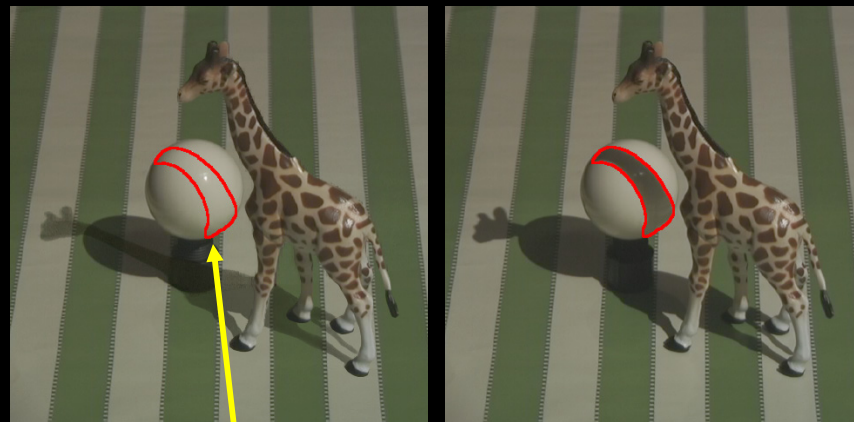
blue screen composite

photograph



blue screen composite

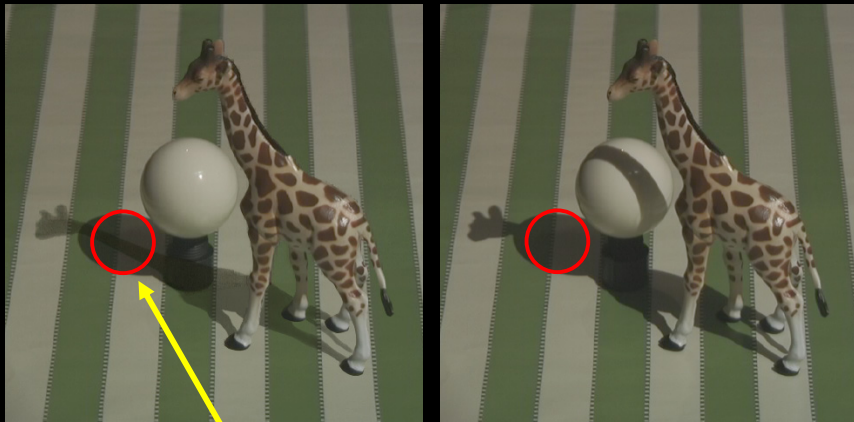
photograph



Geometric errors

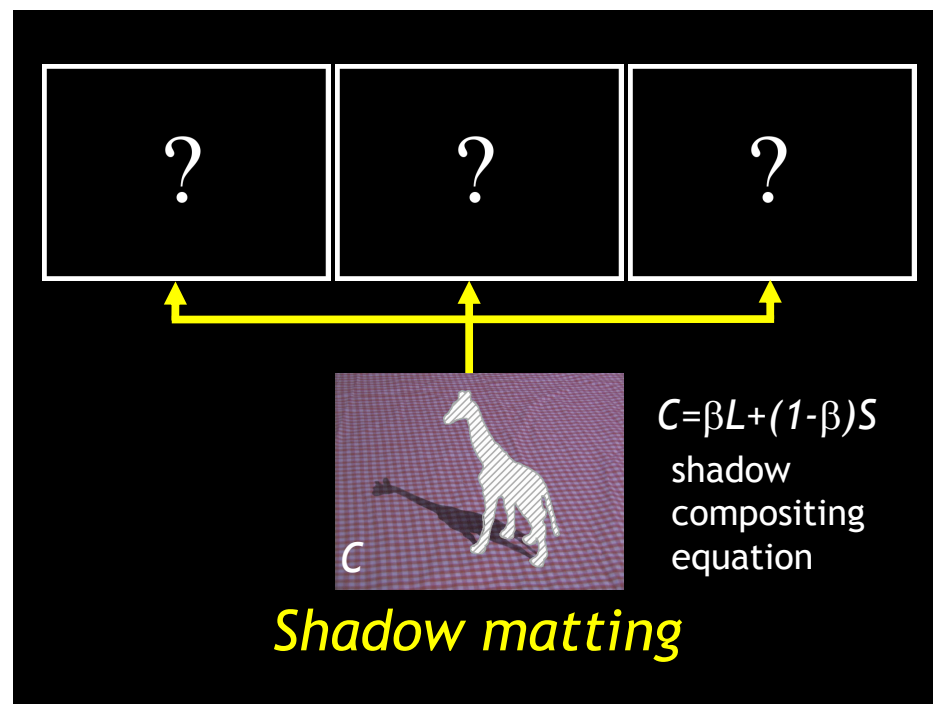
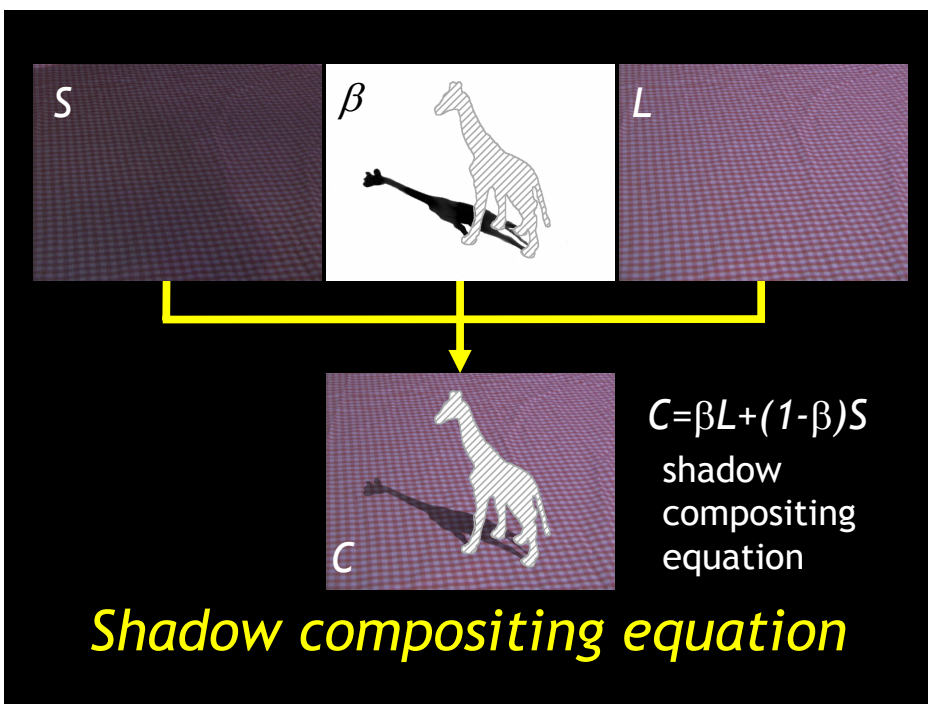
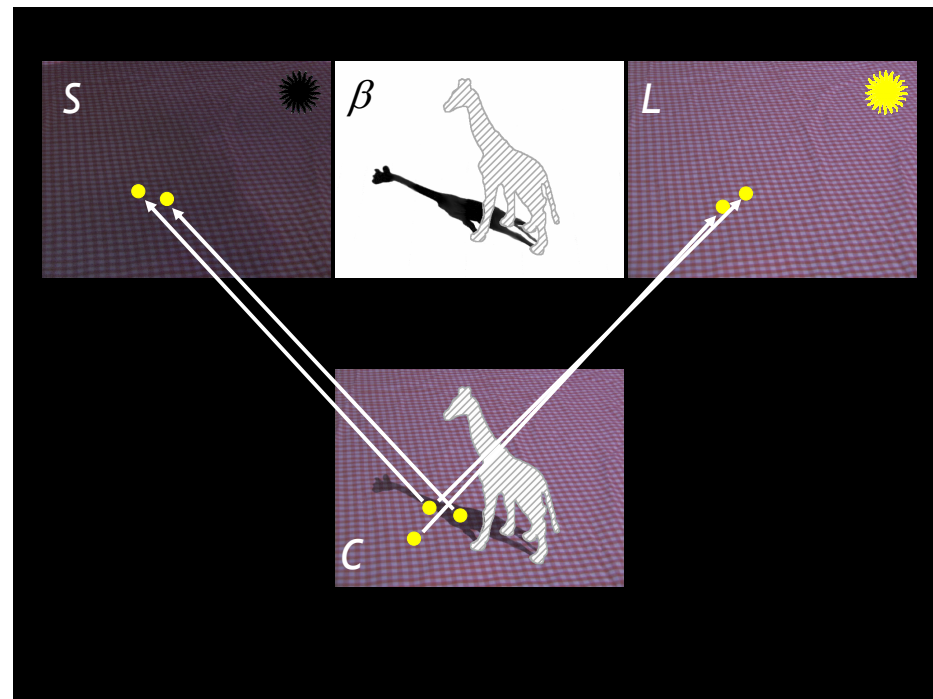
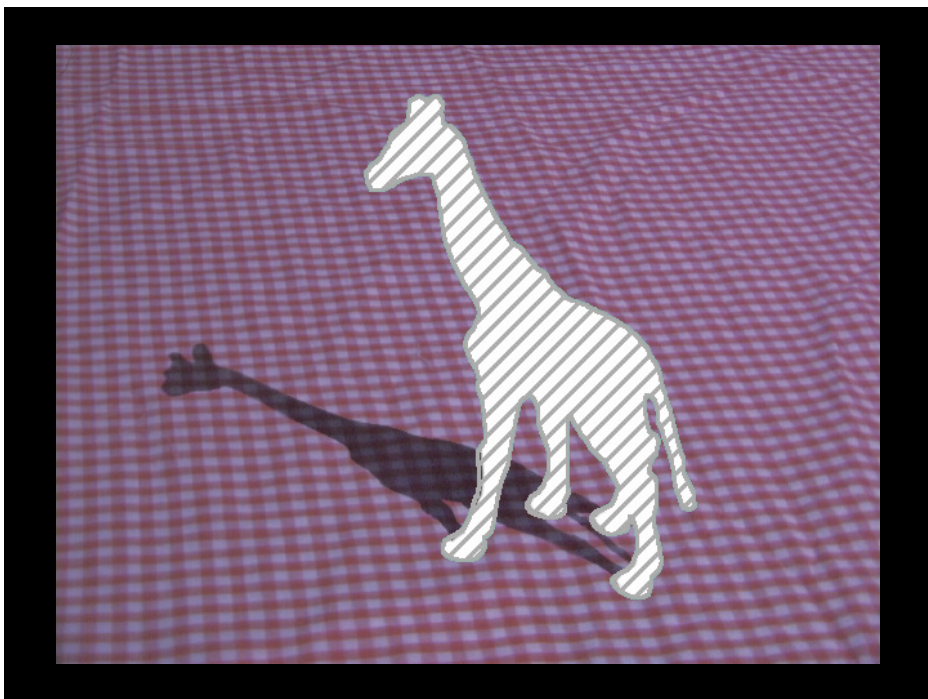
blue screen composite

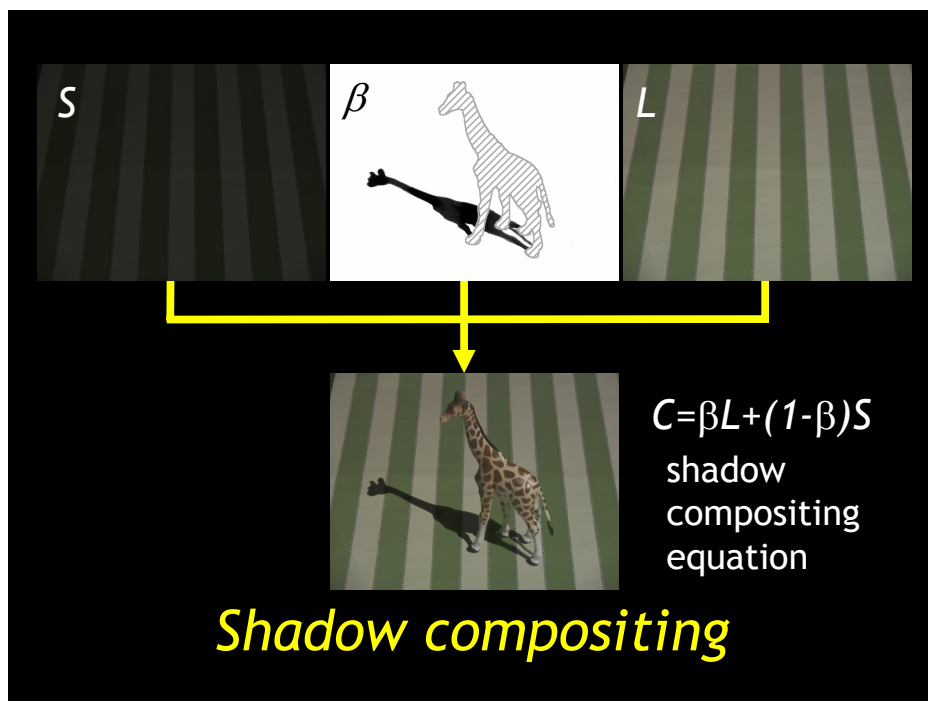
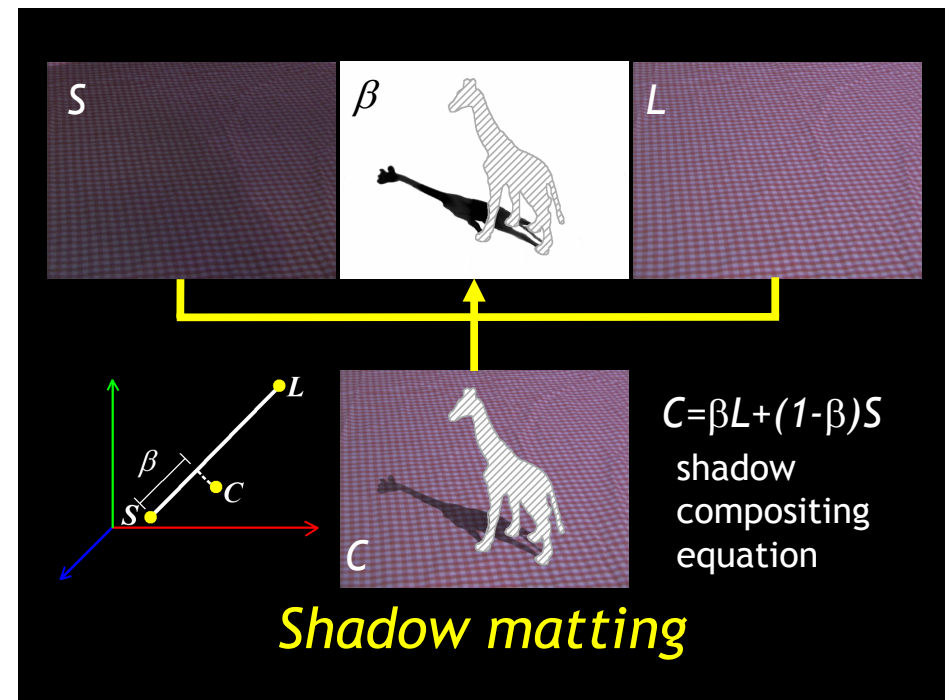
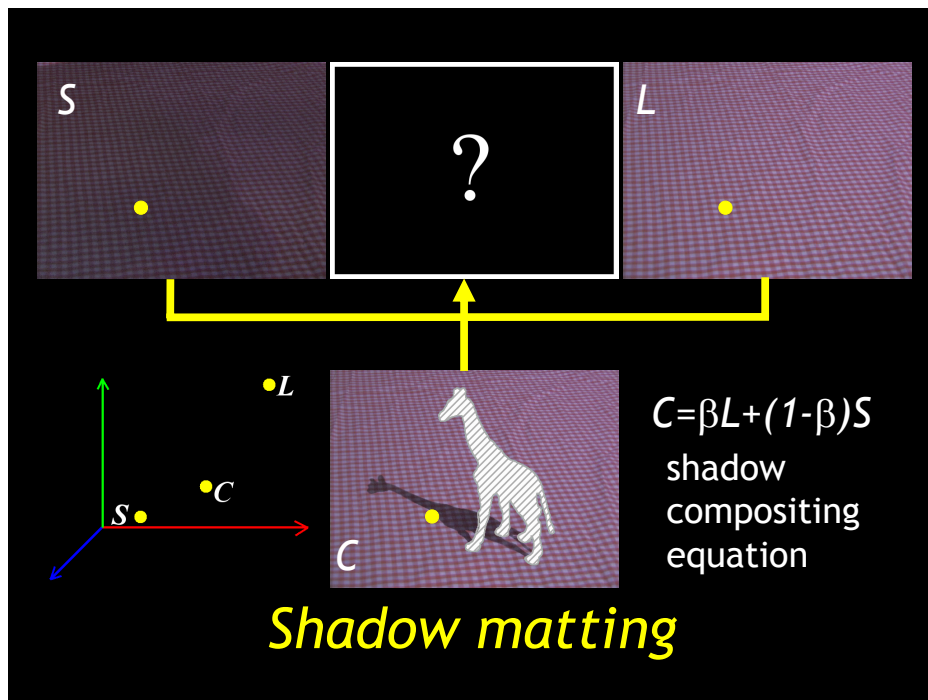
photograph

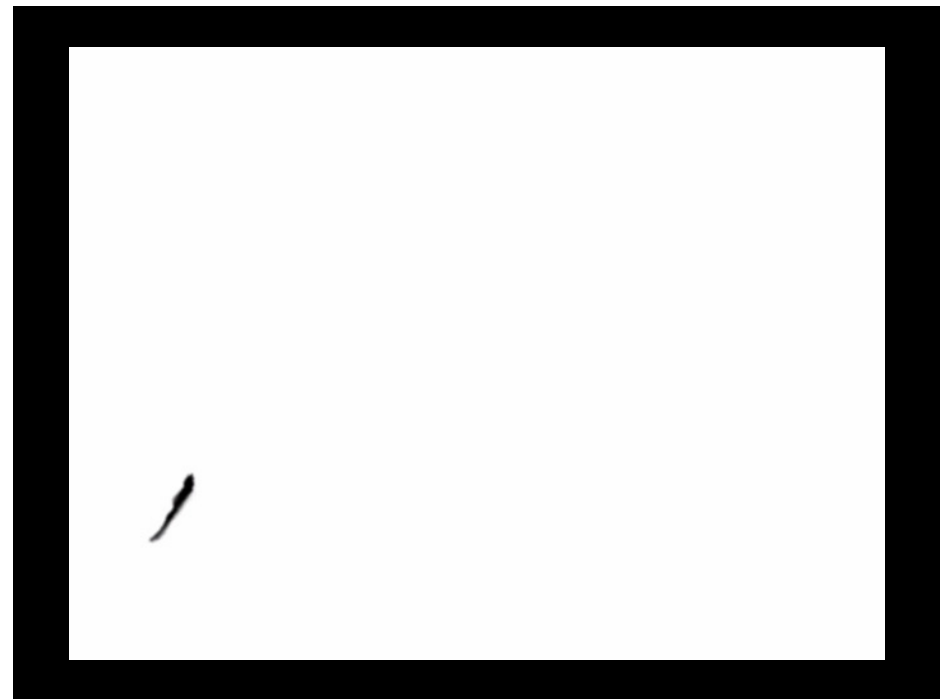


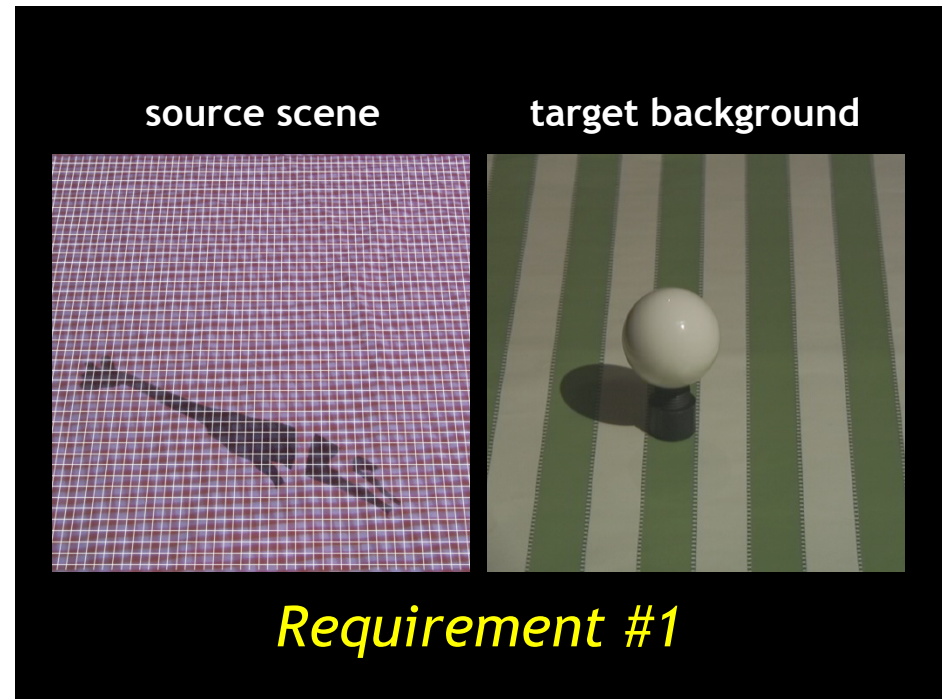
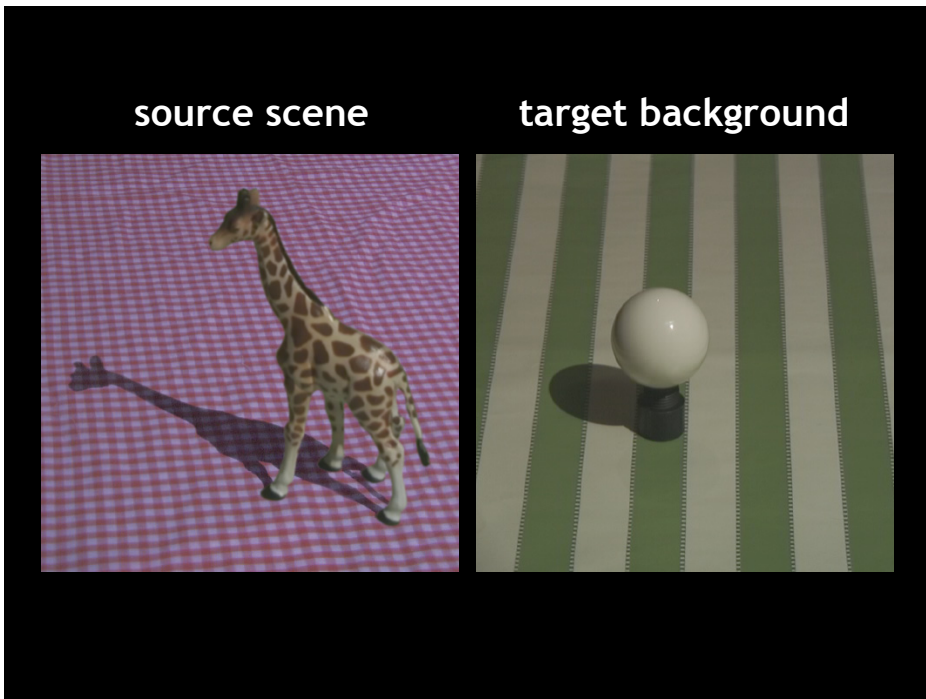
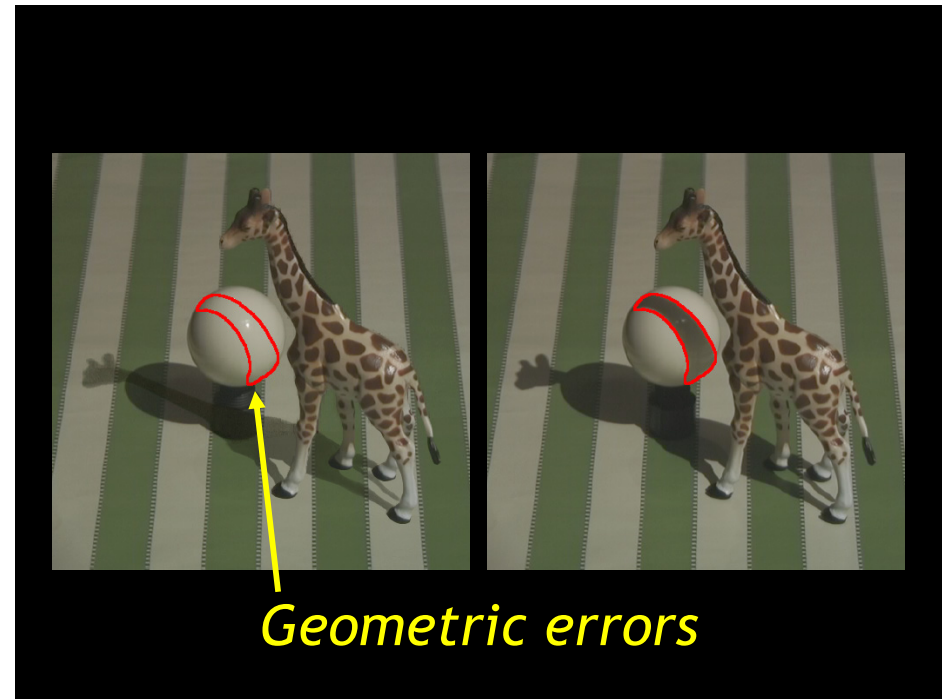
Photometric errors







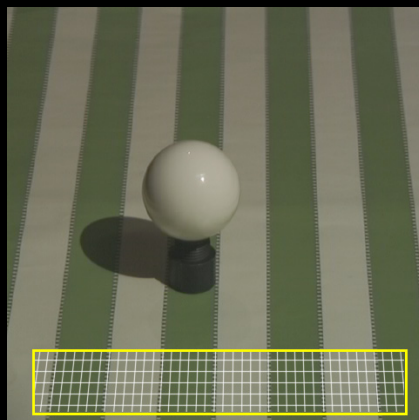
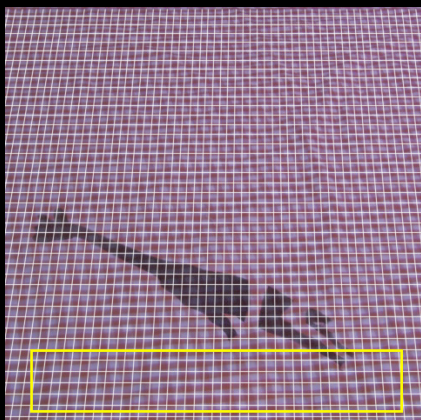




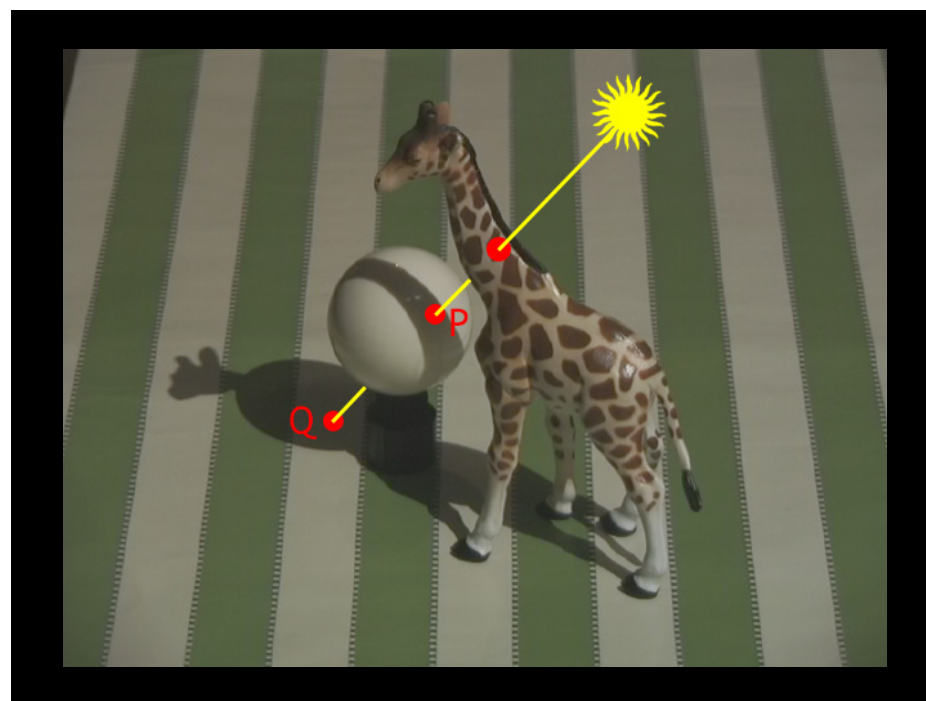
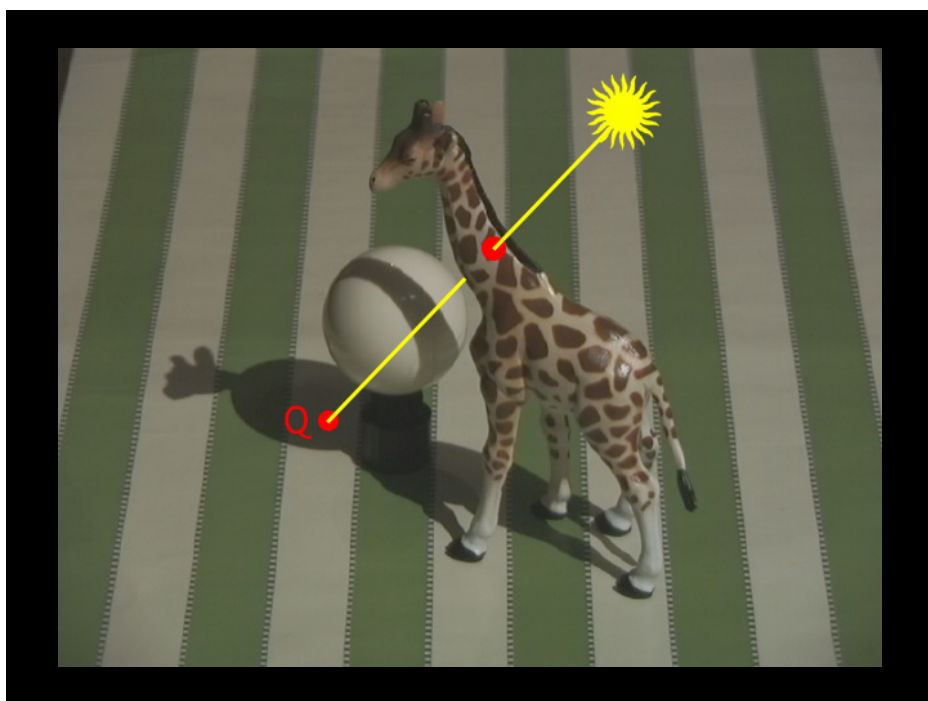
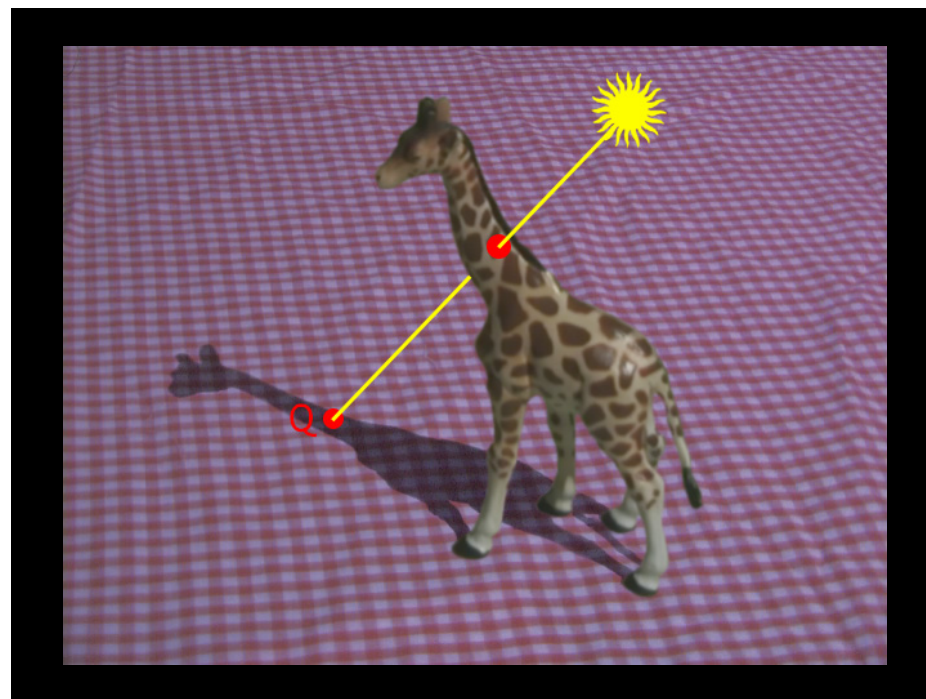
Requirement #1

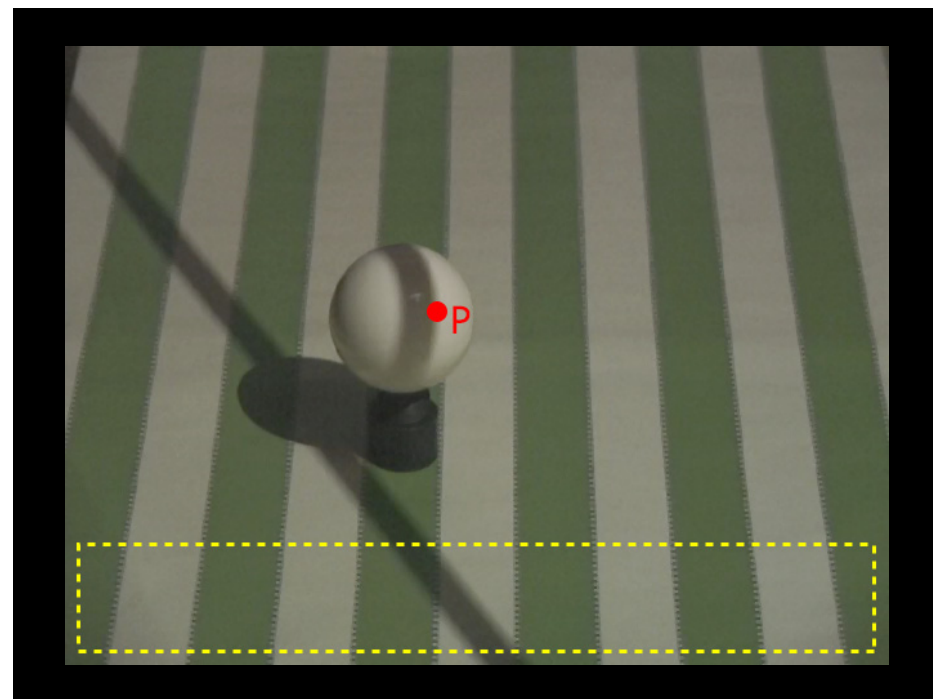
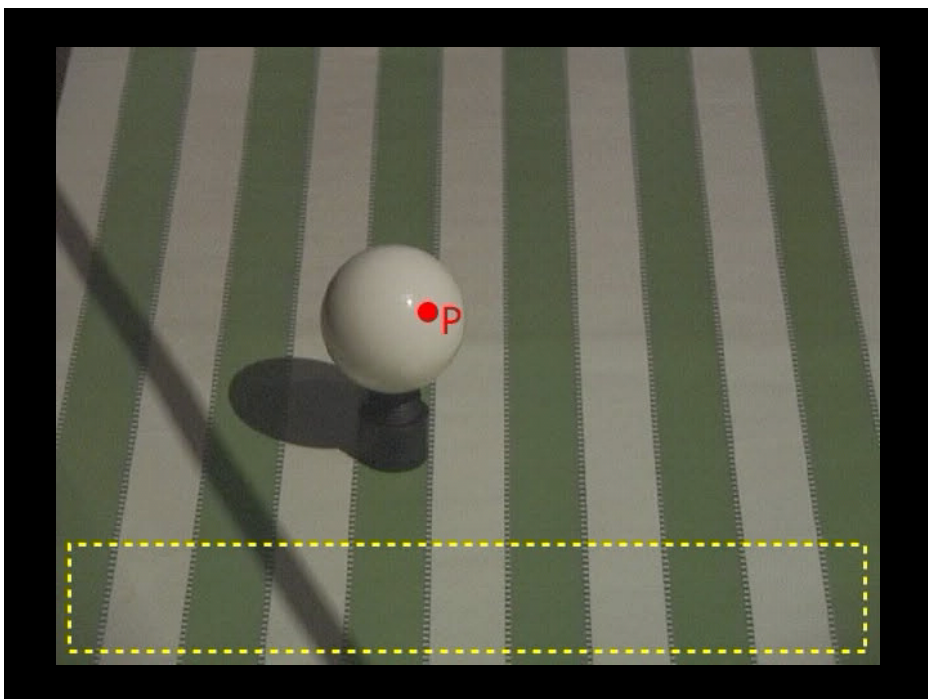
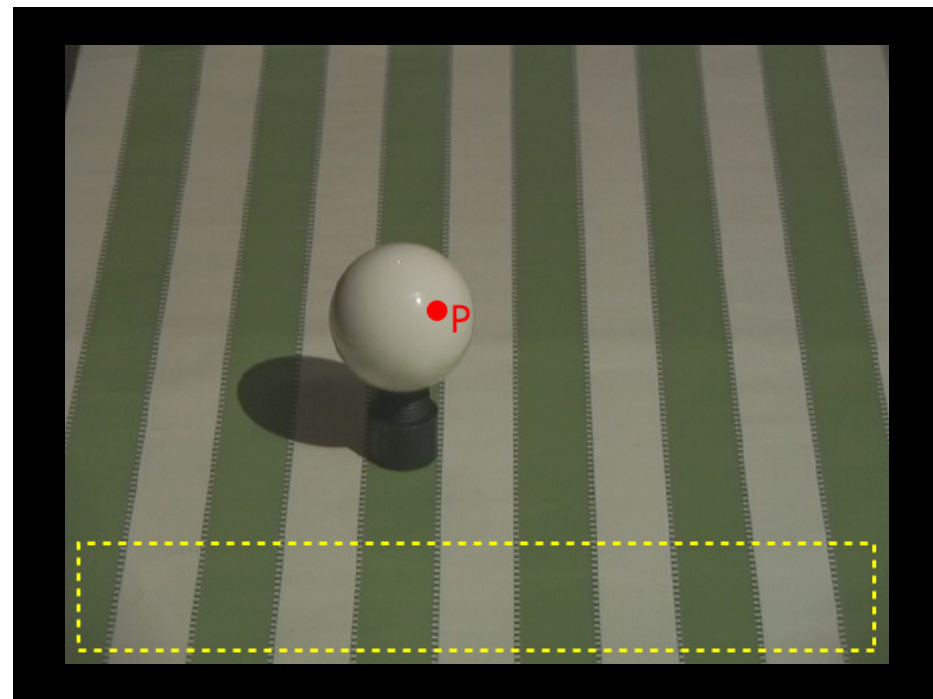
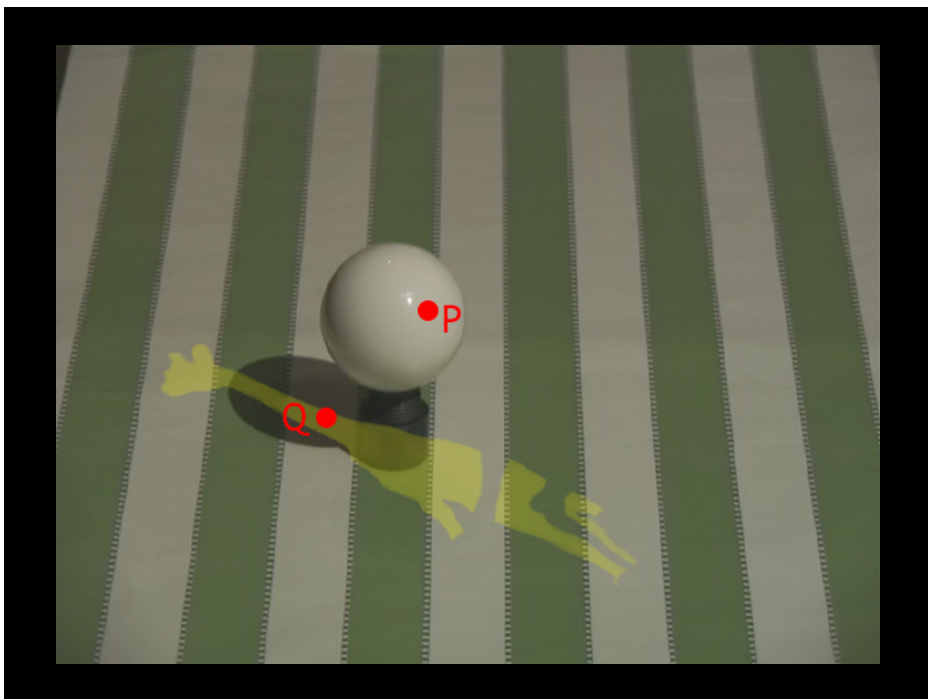
source scene

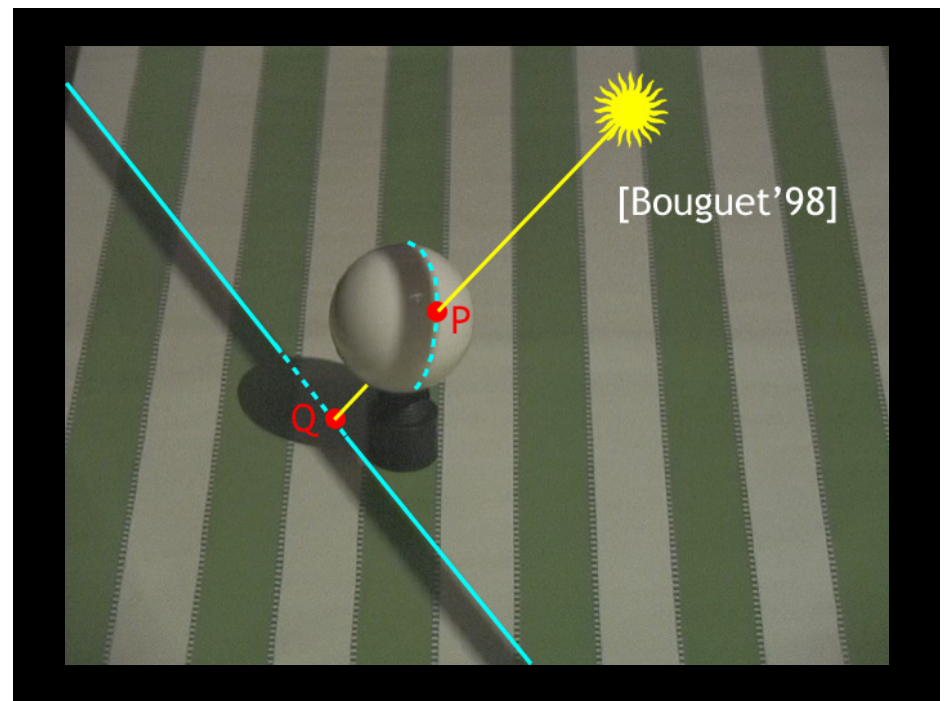
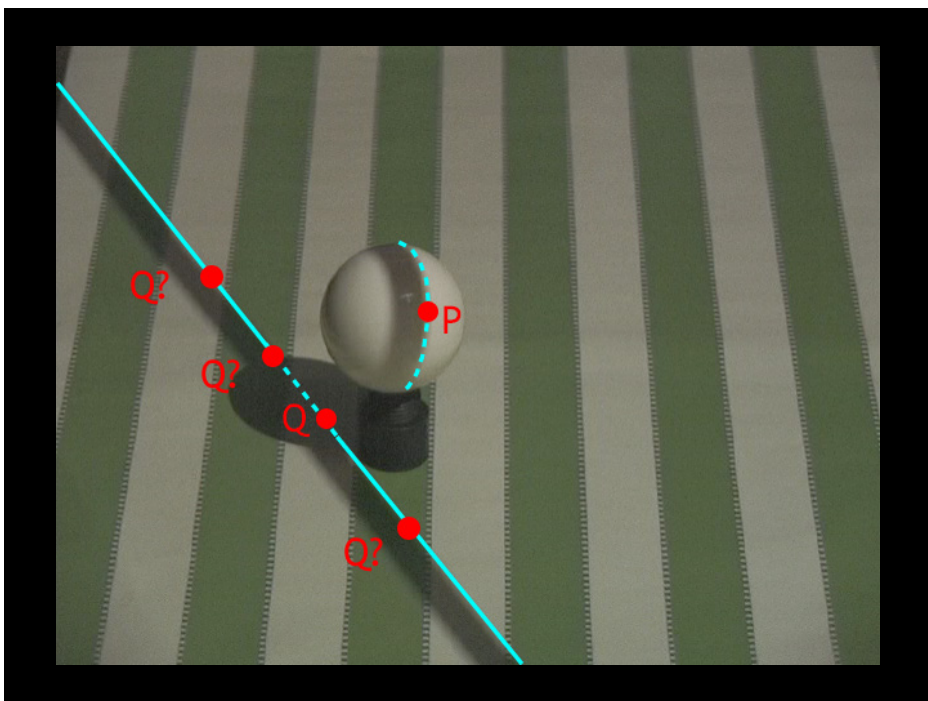
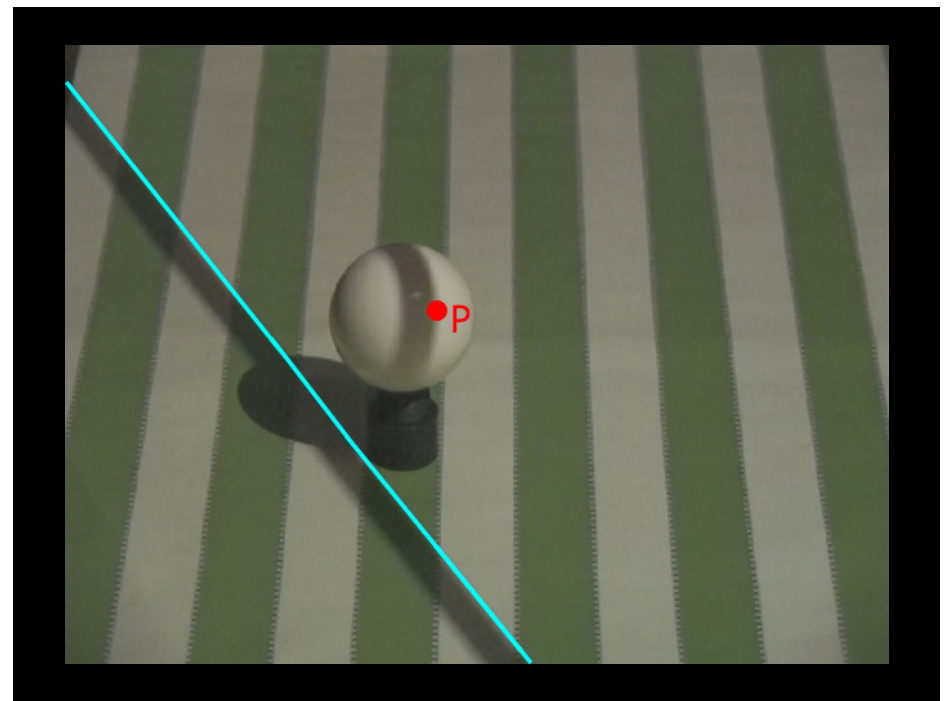
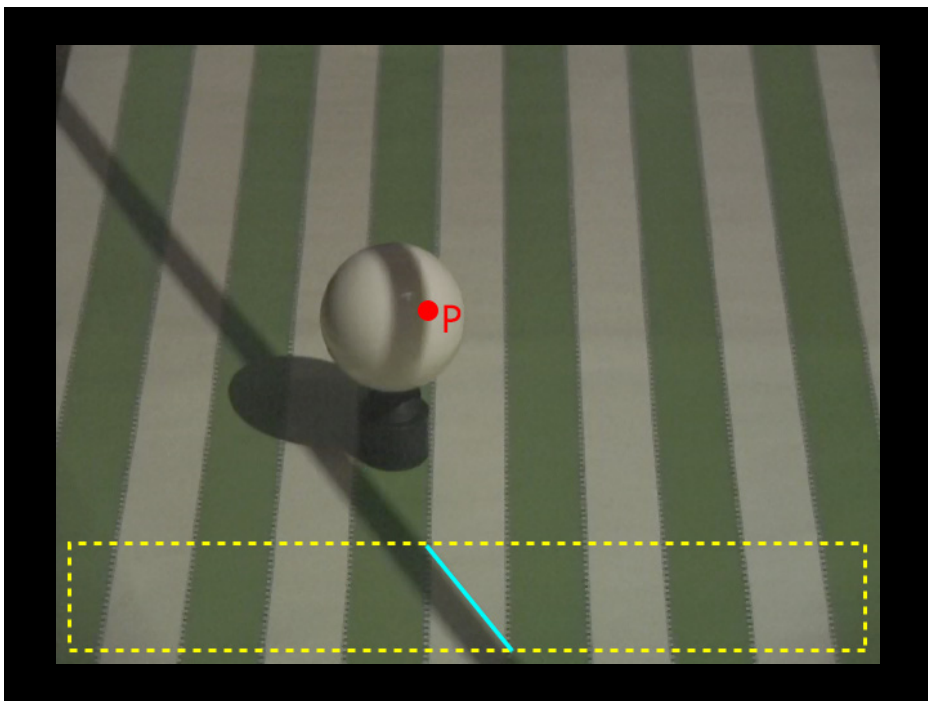
target background

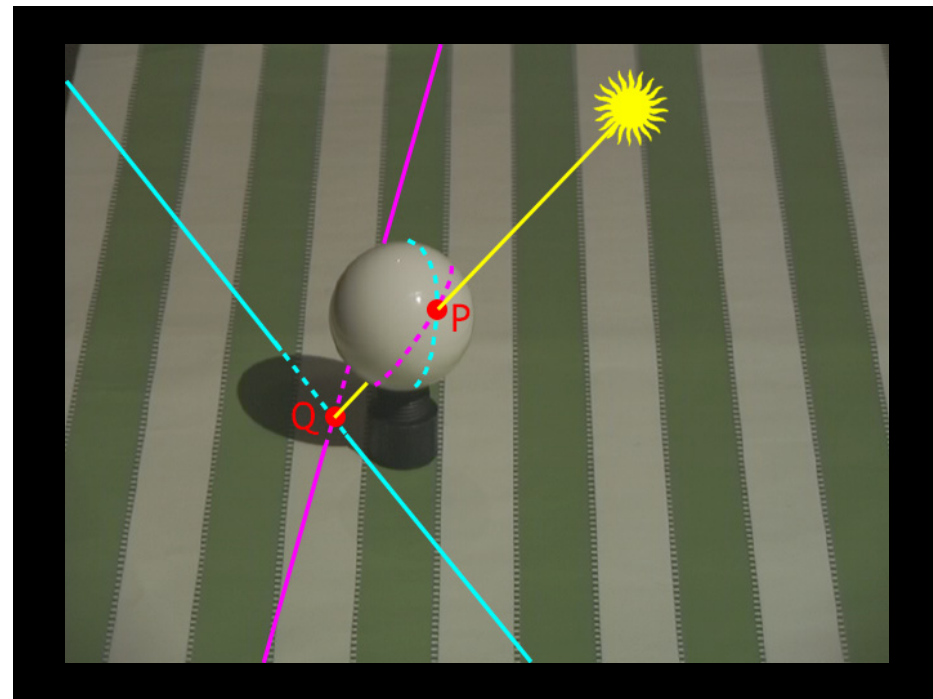
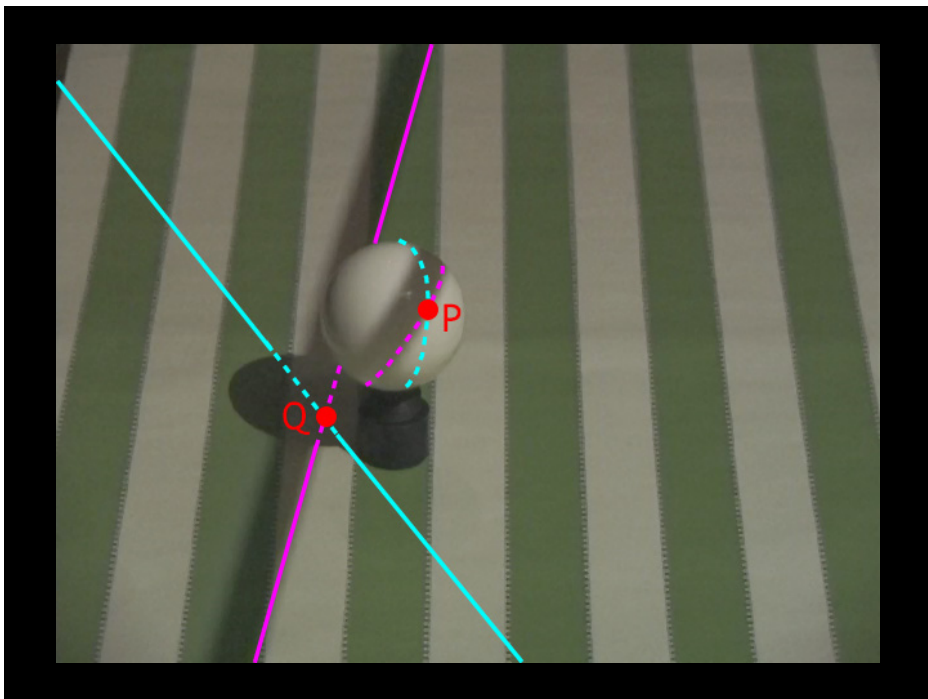
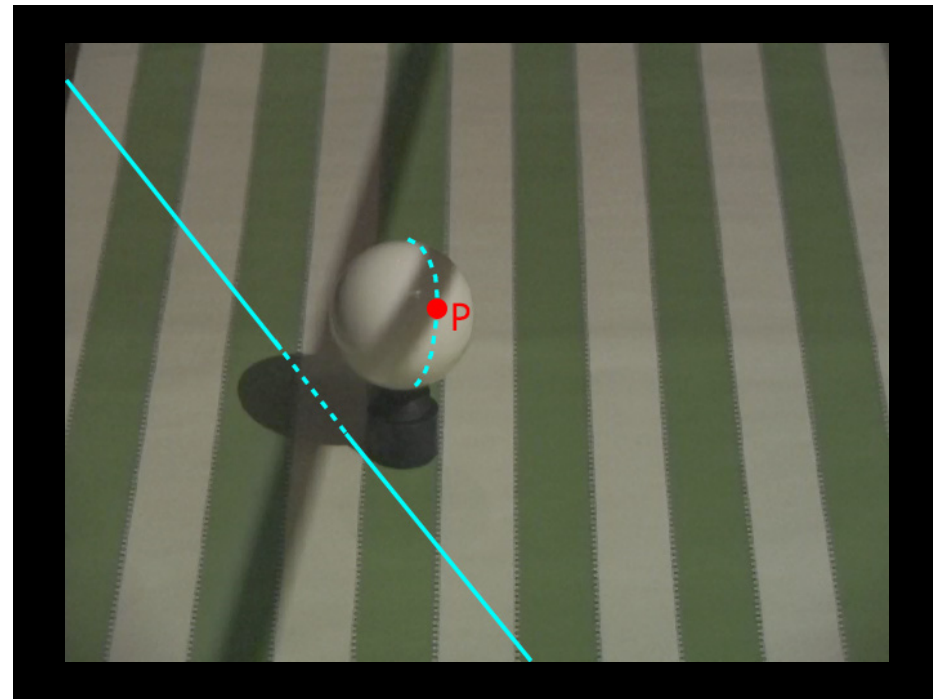
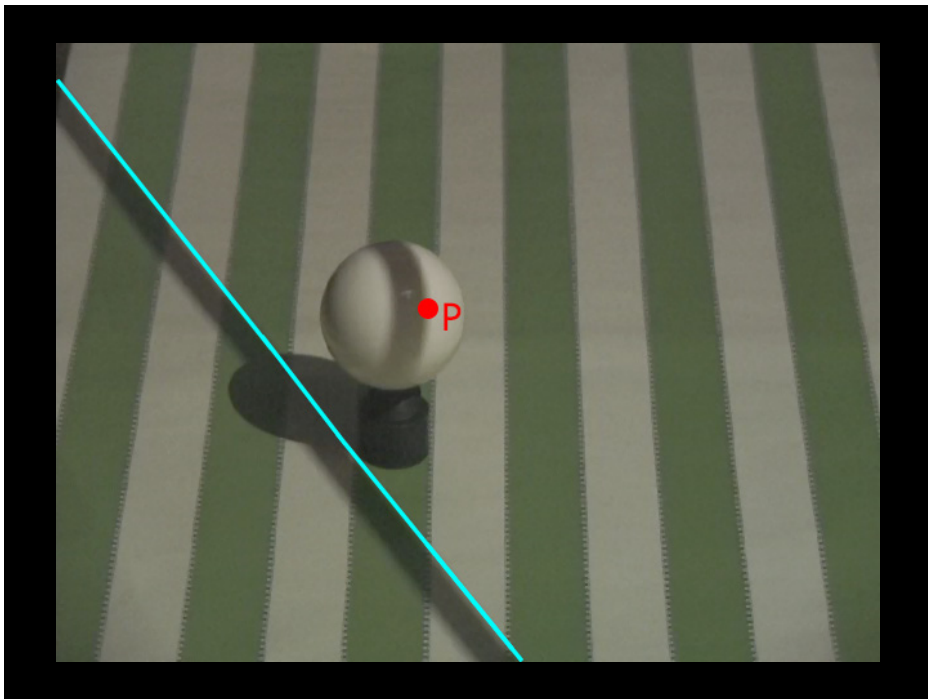


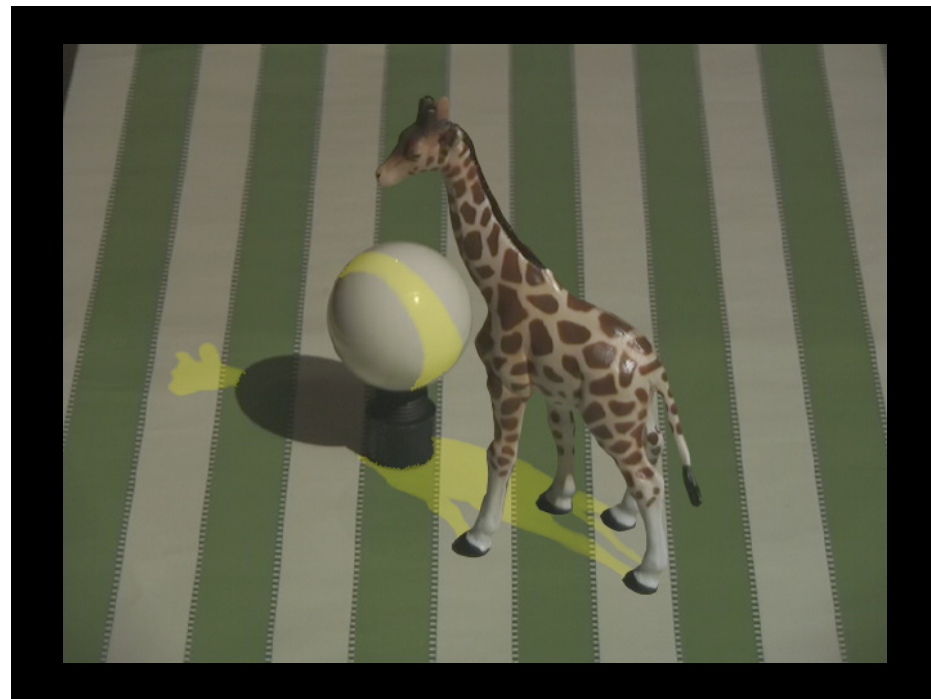
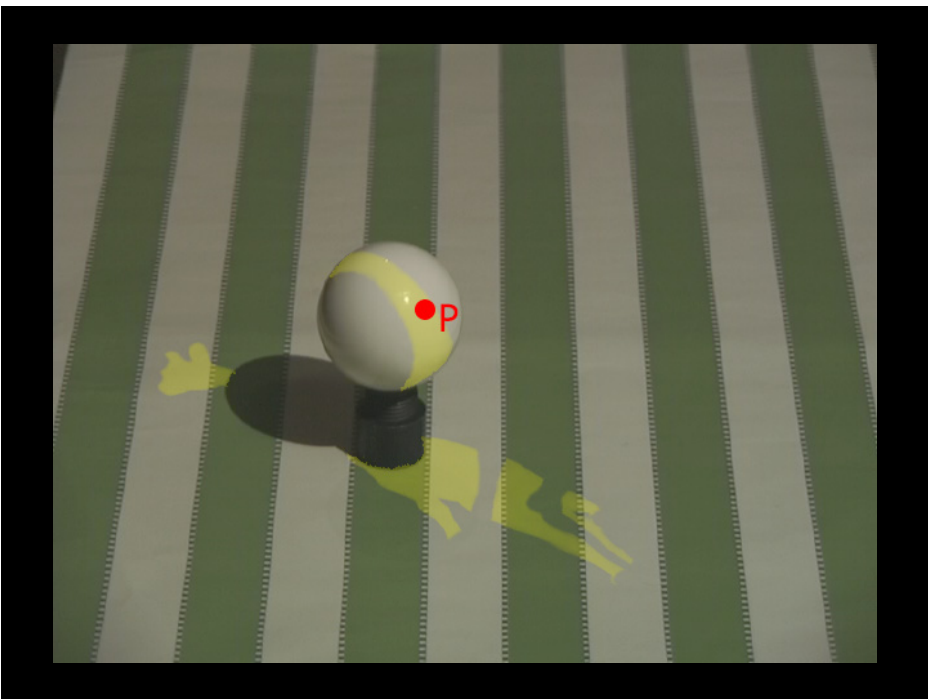
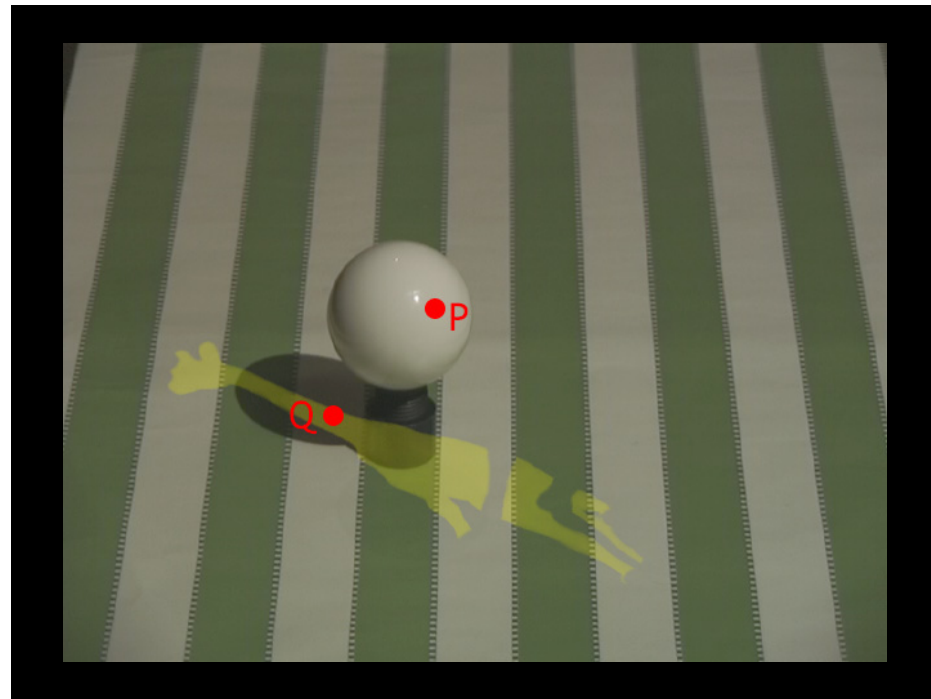
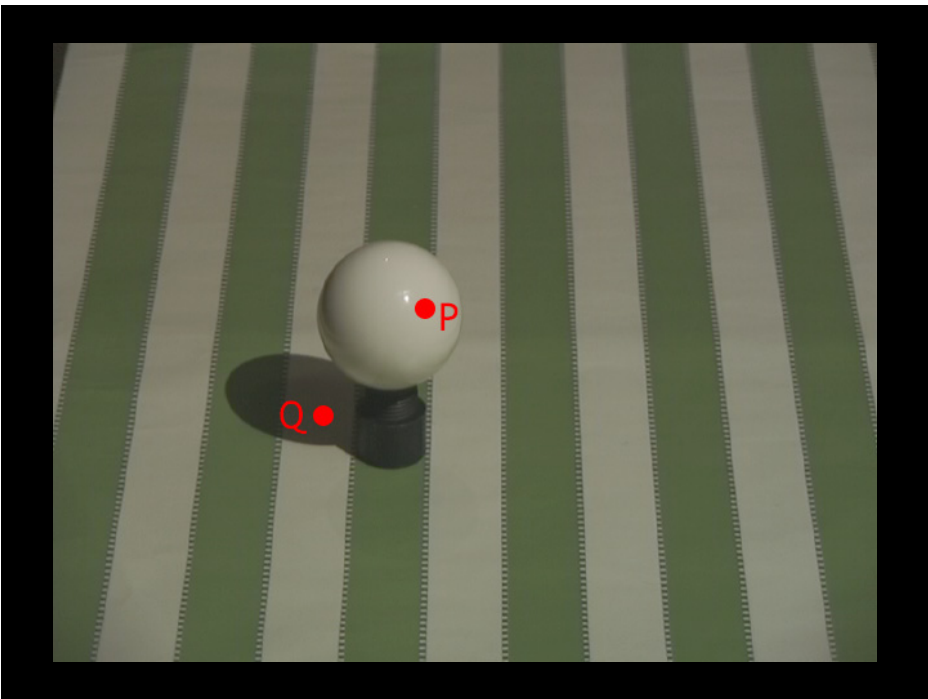
Requirement #2

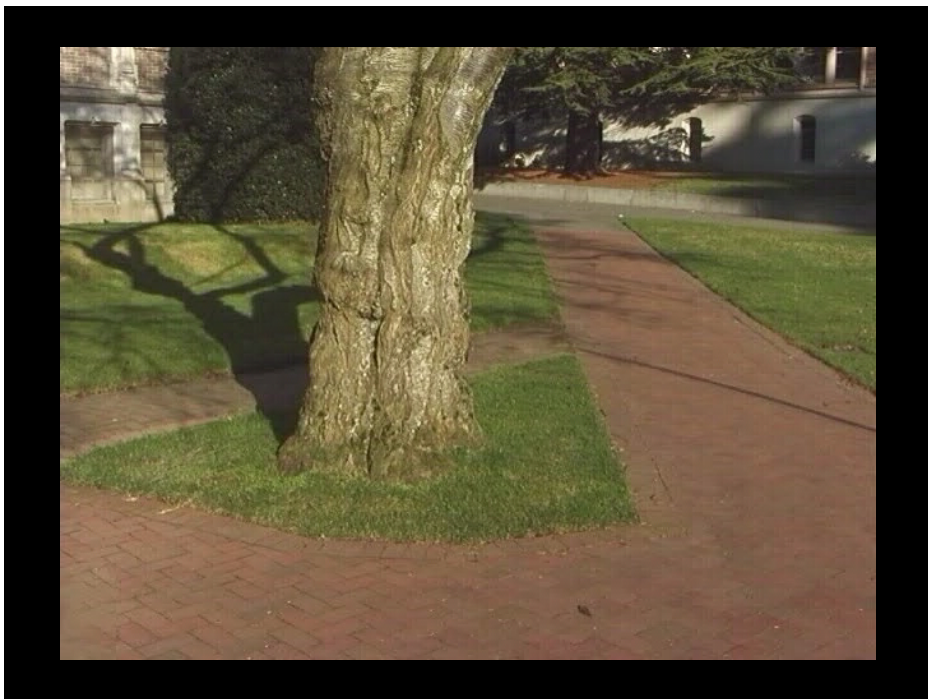
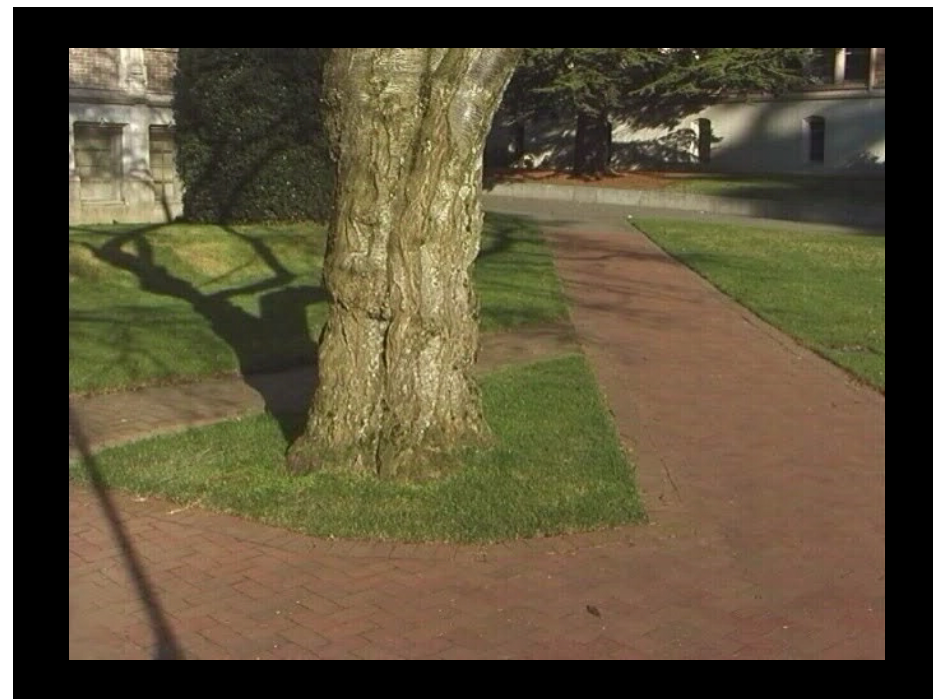
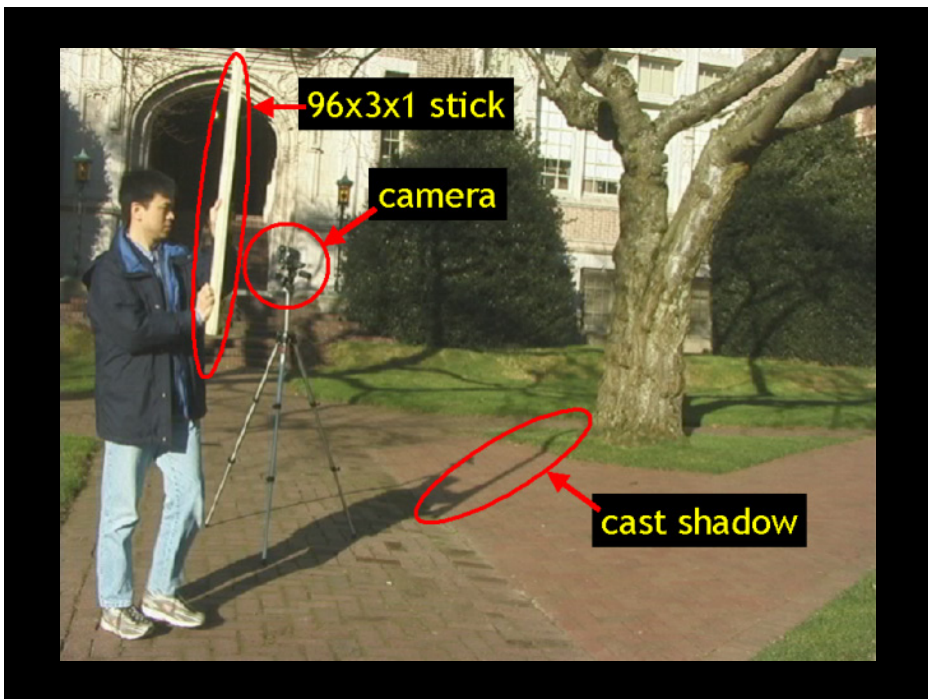


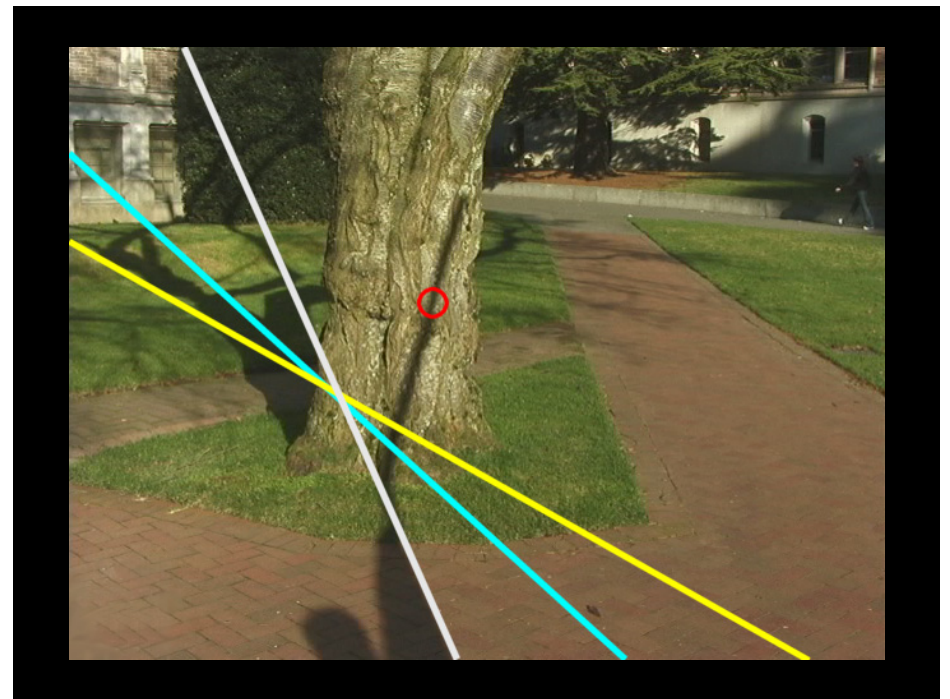
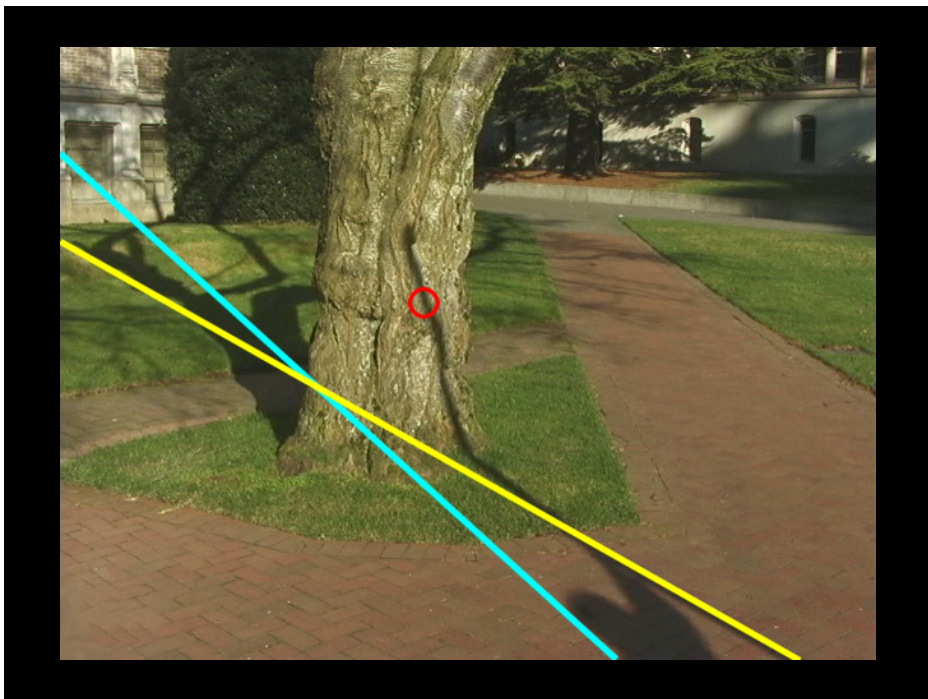


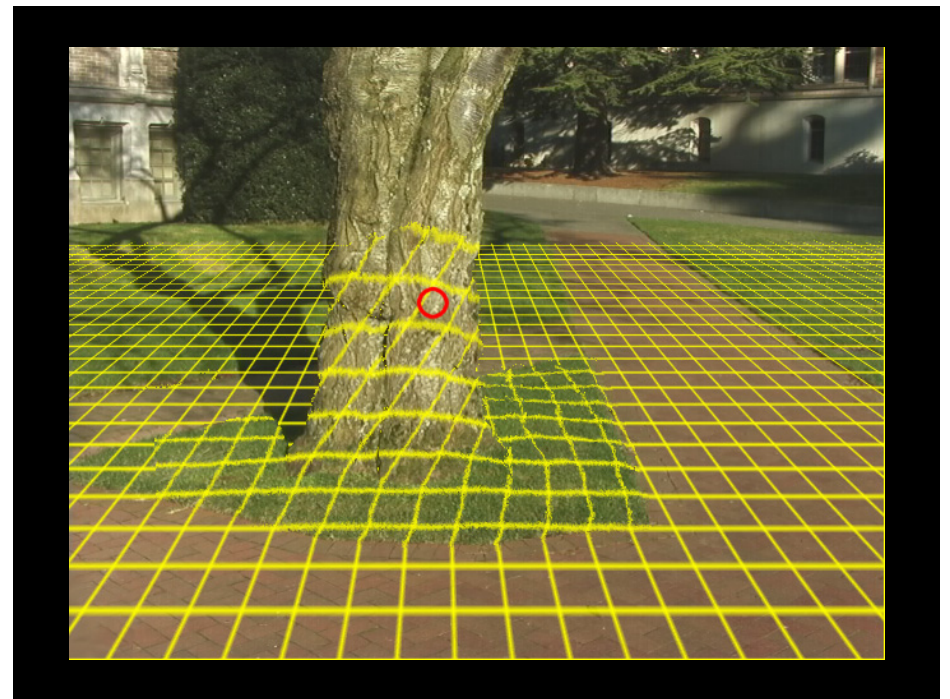
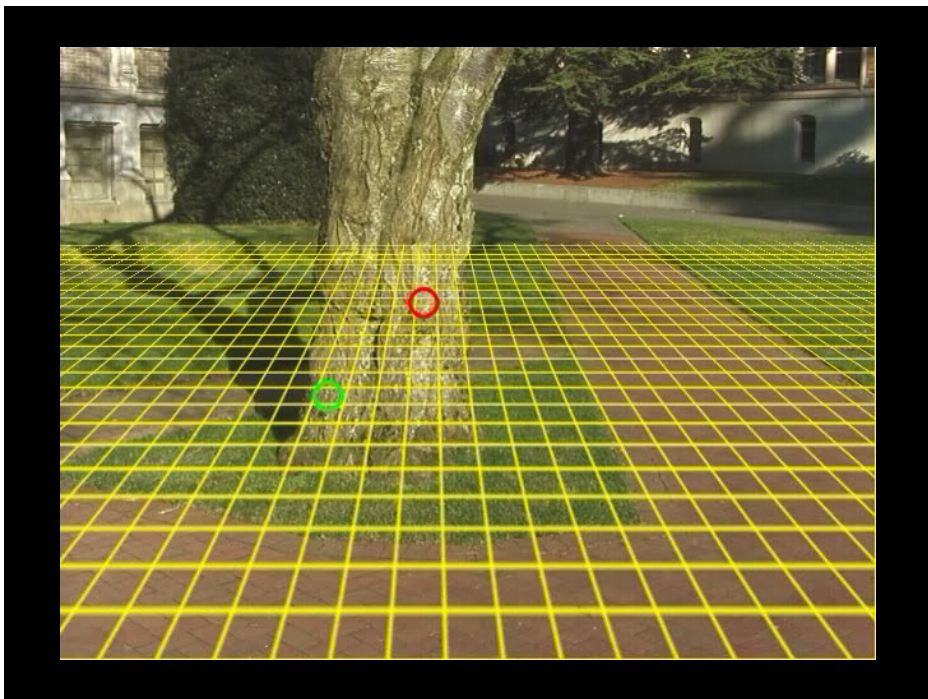
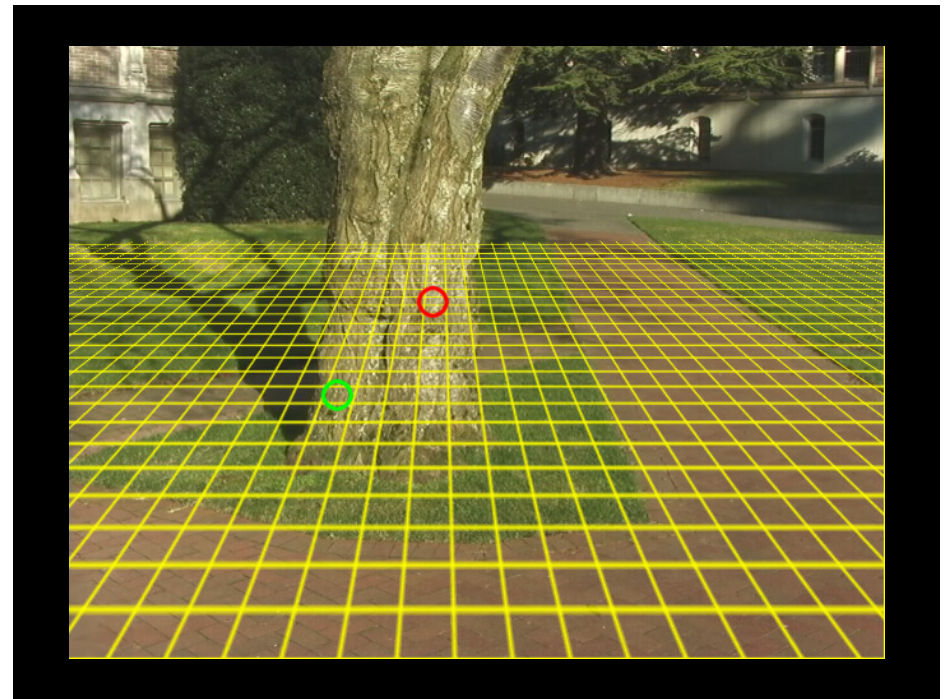
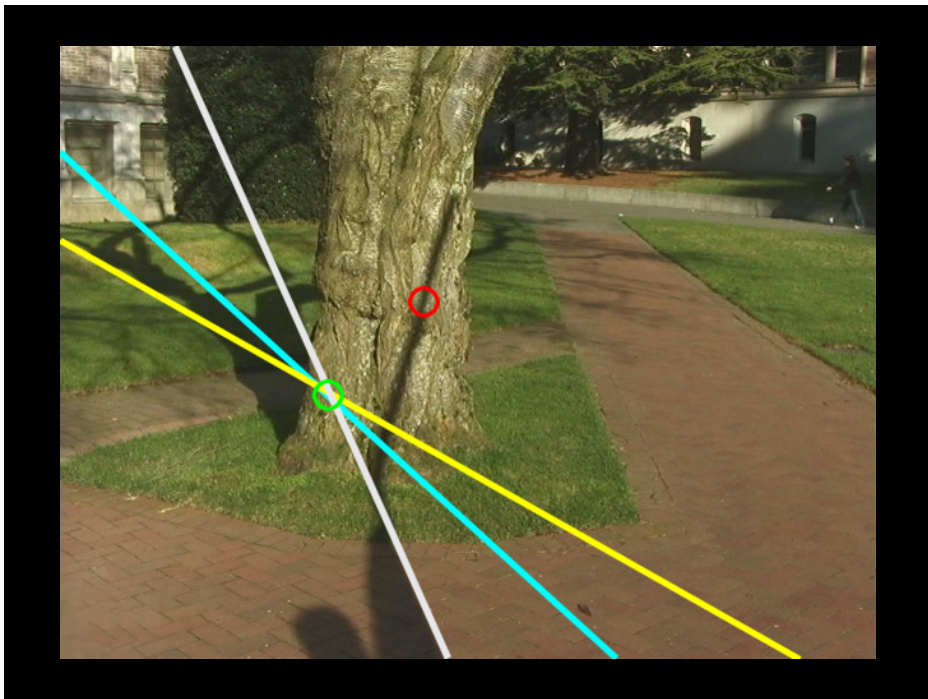


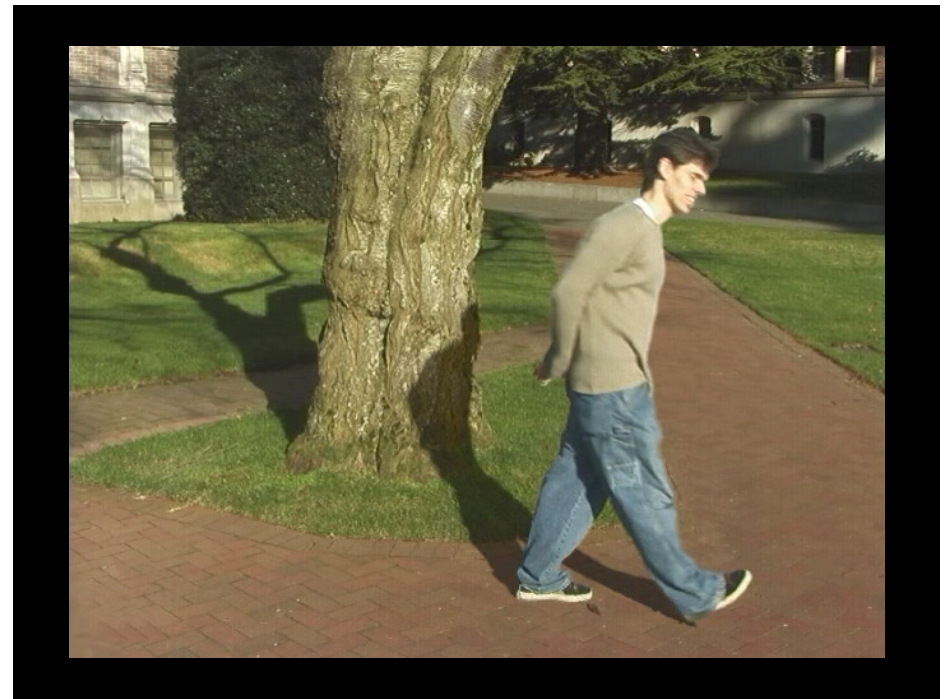
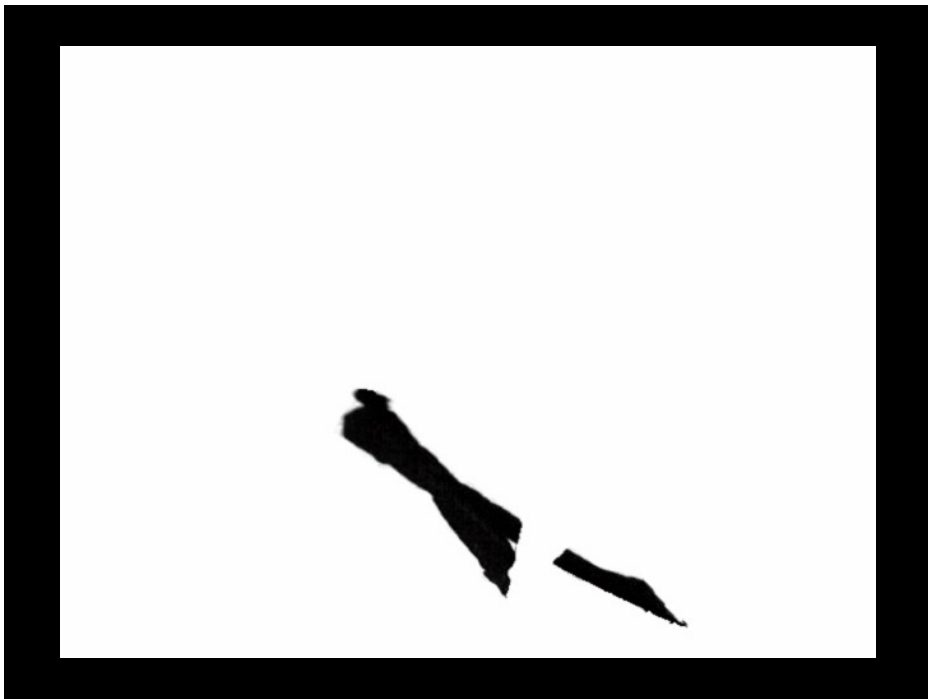














Reference

- Yung-Yu Chuang, Brian Curless, David Salesin, and Richard Szeliski, [A Bayesian Approach to Digital Matting](#), CVPR 2001, pp264-271.
- Yung-Yu Chuang, Aseem Agarwala, Brian Curless, David H. Salesin, Richard Szeliski, [Video Matting of Complex Scenes](#), SIGGRAPH 2002.
- Yung-Yu Chuang, Dan B. Goldman, Brian Curless, David H. Salesin, Richard Szeliski, [Shadow Matting and Compositing](#), SIGGRAPH 2003.